



CHINA GATE GENERAL TRADING

Products Technical Information for Valves

CHINA GATE GENERAL TRADING SP L.L.C.

Tel: +971-56-886-6009 / +971-2-626-7718

Email: amjad@chinagate.ae / info@chinagate.ae

Add : Business Tower 704, Mohammed Bin Zayed St.,
Abu Dhabi - Al Zahiyah



CHINA GATE GENERAL TRADING

تشاينا غيت للتجارة العامة

ALL TYPES OF PIPES, FITTINGS, & VALVES

About Us

China Gate is a General Trading company that targets the UAE market with the aim of supplying the market with the best quality and cost efficient sources of safety, building, and hardware materials.

We are able to source and service both regional and domestic customers. China gate maintains a large in house data, which enables us to quickly source commodities and materials and make prompt and competitive quotations with the fastest delivery.

China Gate was able to work with relevant companies, stakeholders, and authorities to establish the necessary registrations and approvals for the manufacturers it represents.

China Gate has also managed to get authority approval for several manufacturers in the field of Infrastructure that includes DI Pipes and Fittings, Valves, Manhole Cover and Frames, Electromagnetic Flowmeter, and Carbon Steel Pipes and Fittings, HDPE Pipes & Fittings.

It is always our endeavor that we coordinate and deal with reputed manufacturers, factories, and suppliers that meet the satisfaction in terms of quality as well as price competitiveness of our end user.



CHINA GATE GENERAL TRADING

تشاينا غيت للتجارة العامة

ALL TYPES OF PIPES, FITTINGS, & VALVE

CONTENTS

CJD Concentric rubber seated butterfly valve	01
DTD Tri- eccentric Metal Seated Butterfly Valves .	09
DTD Rubber Seated Double Eccentric Butterfly Valve .	27
GSD Bi-directional PTFE Seated Butterfly Valve	37
Floating Ball Valve	50
Trunnion Mounted ball valve	55
Globe Valve	60
Swing Check Valve	65
Gate Valve	70



CJD Concentric rubber seated butterfly valve

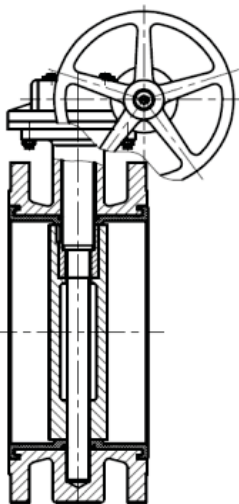
I. Structure & Features

Concentric rubber seated butterfly valve is the type valve which in the flow channel using thicker polymer material lining technology. The function of lining material is completely isolated the media and the valve body. The lining material with good performance of anti-corrosion. It can be used in medium like Acid, alkali, salt and oxidizing agents, reducing agents, organic solvent, etc. This type of valves is widely used in chemical, petroleum, pharmaceutical, food, metallurgy, paper and other industries for shut off and control media flow.

- ◆ Bi-directional tight
- ◆ Simple design, Small volume, light weight, operating torque in small
- ◆ Easy disassembly and repair, and can be installed in any position.
- ◆ The flow characteristics of that is linear, good performance in flow control;
- ◆ The chosen of seal material is multiple, and can be applied to various medium;
- ◆ It can replace the gate valve, globe valve, and plug valve



II. Specification



	European System PN	American System Class	
Nominal Diameter	DN50~DN1200	NPS2~NPS24	
Nominal Pressure	PN6~PN16	CL150	
Designing standard	EN593	ASME B16.34	
Flange standard	EN1092-1	ASME B16.5 ASME B16.47	
Face to Face dimension	EN558.1	API 609	
Pressure test	EN12266-1	API 598	
Shell test	1.5×CWP		
Seal test (water)	1.1×CWP		
Seal test (air)	0.6MPa		
Body material	Cast iron, Ductile iron, Carbon steel.		
Type of rubber seat	NBR	EPDM	FPM
Working temp.℃	-29~120	-29~150	-29~180
Medium:	Water, sea water, gas, acid, Alkali, salt, mud etc.		

CWP: Cold Working Pressure



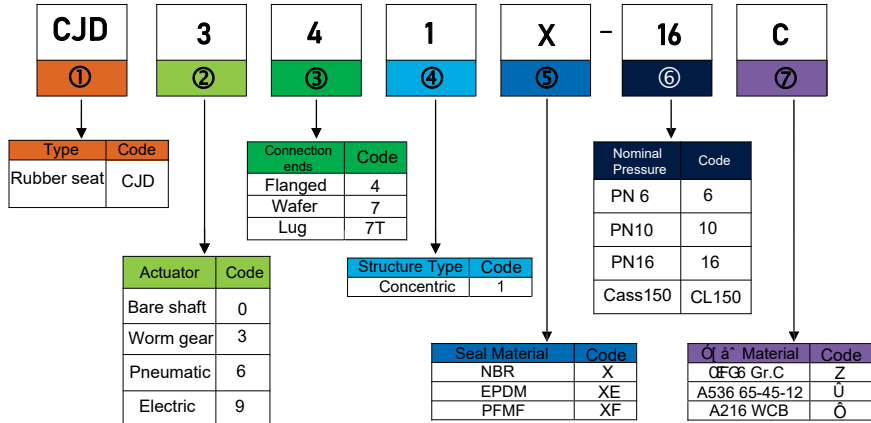
CHINA GATE GENERAL TRADING

تشاينا غيت للتجارة العامة

ALL TYPES OF PIPES, FITTINGS, & VALVES

Concentric Rubber Seated Butterfly Valve

III. Type Code



IV. Material Selection

Valve Material		Gray cast iron Z	Ductile cast iron Q	Carbon steel C
Spare Parts	01 Bottom cover	A570 Gr. A, A182 F304, A182 F316		
	02 Bolts	A193 B7, A193 B8, A193 B8M		
	03 Split collar	A276 420, A276 304, A276 316		
	04 Gasket	Flexible graphite		
	05 Thrust washer	A276 420, A276 304, A276 316		
	06 Bearing	JF800, SF-1S, SF-1SS		
	07 Lower stem	A276 420, A276 301, A705 630		
	08 Rubber seat	NBR, EPDM, FPM		
	09 Body	A126 Gr.C	A536 65-45-12	A216 WCB
	10 Disc	A216 WCB, A351 CF8, A351 CF8M		
	11 Splined hub	A108 Gr.1045, A705 630, 2205		
	12 top stem	A276 420, A276 301, A705 630		
	13 O-ring	FPM		
	14 Packing ring	A276 420, A276 304, A276 316		
	15 Snap ring	A276 420, A276 304, A276 316		
	16 Packing gland	A276 420, A276 304, A276 316		



CHINA GATE GENERAL TRADING

تشاينا غيت للتجارة العامة

ALL TYPES OF PIPES, FITTINGS, & VALVES

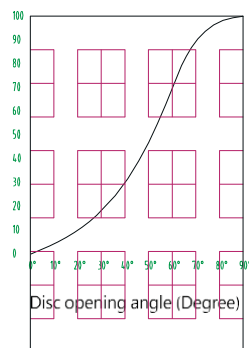
V. Disassembled View



VI. Discharge Parameter Diagram

DN	50	65	80	100	125	150	200
NPS	2	2.5	3	4	5	6	8
Discharge parameter Cv	145	225	325	490	725	1650	2180
DN	250	300	350	400	450	500	600
NPS	10	12	14	16	18	20	24
Discharge parameter Cv	3550	5370	7565	10250	13370	16850	25080
DN	700	750	800	900	1000	1100	1200
NPS	28	30	32	36	40	44	48
Discharge parameter Cv	35365	41100	47360	61500	78000	96000	118000

Cv is recorded when both sides of pressure are according to 1 PSI standard



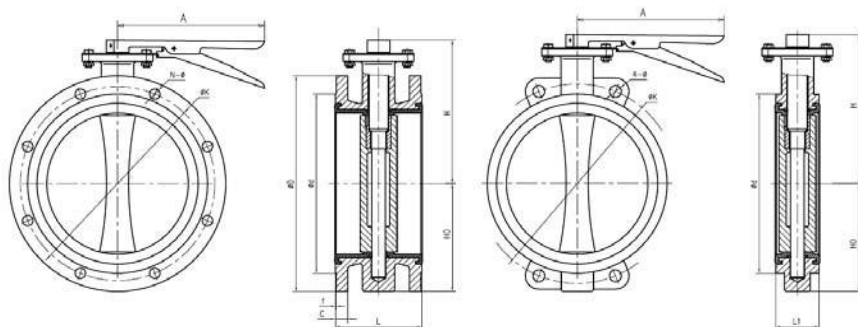


CHINA GATE GENERAL TRADING

تشاينا غيت للتجارة العامة

ALL TYPES OF PIPES, FITTINGS, & VALVES

VII. Dimension Drawing



CJD41X-6C, CJD71X-6C

DN	L	L1	D	K	N-Ø	d	C	f	H	Ho	A	Weight (Kg)
50	108	43	140	110	4-Ø14	90	14	3	120	85	260	6.5
65	112	46	160	130	4-Ø14	110	14	3	153	104	260	8.8
80	114	46	190	150	4-Ø18	128	16	3	163	114	260	9.6
100	127	52	210	170	4-Ø18	148	16	3	182	1-0	260	11.8
125	140	56	240	200	8-Ø18	178	18	3	260	183	350	16.2
150	140	56	265	225	8-Ø18	202	20	3	280	202	400	19.7

CJD41X-10C, CJD71X-10C

CJD41X-16C, CJD71X-16C

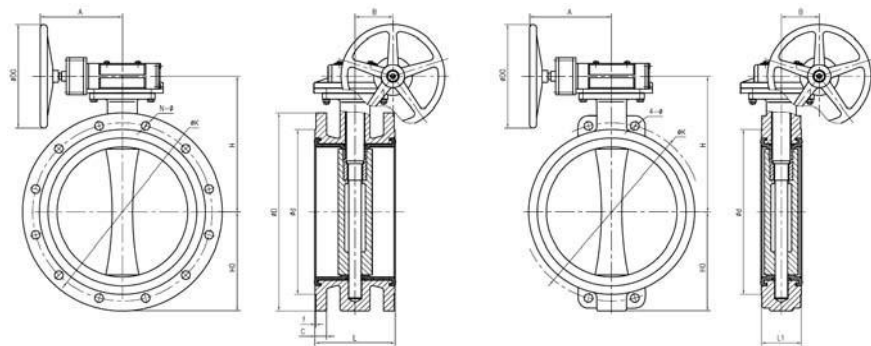
DN	L	L1	D	K	N-Ø	d	C	f	H	Ho	A	Weight (Kg)
50	108	43	165	125	4-Ø18	102	18	3	120	85	260	7.6
65	112	46	185	145	8-Ø18	122	18	3	153	104	260	9.7
80	114	46	200	160	8-Ø18	138	20	3	163	114	260	10.6
100	127	52	220	180	8-Ø18	158	20	3	182	140	260	13.8
125	140	56	250	210	8-Ø18	188	22	3	260	183	350	18.2
150	140	56	285	240	8-Ø22	212	22	3	280	202	400	21.7



CHINA GATE GENERAL TRADING

تشاينا غيت للتجارة العامة

ALL TYPES OF PIPES, FITTINGS, & VALVES



CJD341X-6, CJD371X-6

DN	L	L1	D	K	N-Ø	d	C	f	H	Ho	A	B	Do	Weight (Kg)
200	152	60	320	280	8-Ø18	258	22	3	332	200	325	66	305	27.8
250	165	68	375	335	12-Ø18	312	22	3	375	231	325	66	305	41.7
300	178	78	440	395	12-Ø22	365	22	4	410	250	210	78	305	50.9
350	190	78	490	445	12-Ø22	415	22	4	445	285	281	120	406	70.6
400	216	102	540	495	16-Ø22	465	22	4	465	319	365	120	406	96
450	222	114	595	550	16-Ø22	520	22	4	524	354	365	120	406	127
500	229	127	645	600	20-Ø22	570	24	4	596	404	365	146	400	155
600	267	154	755	705	20-Ø26	670	30	5	696	473	525	146	400	215
700	292	165	860	810	24-Ø26	775	30	5	706	520	525	146	400	308
800	318	190	975	920	24-Ø30	880	30	5	816	600	525	305	400	445
900	330	203	1075	1020	24-Ø30	980	34	5	852	628	525	305	400	565
1000	410	216	1175	1120	28-Ø30	1080	38	5	936	705	590	305	400	724
1200	470	254	1405	1340	32-Ø33	1295	42	5	1112	830	590	413	400	1250

CJD341X-10, CJD371X-10

DN	L	L1	D	K	N-Ø	d	C	f	H	Ho	A	B	Do	Weight (Kg)
200	152	60	340	295	8-Ø22	268	24	3	332	200	325	66	305	31.8
250	165	68	395	350	12-Ø22	320	26	3	375	231	325	66	305	44.7
300	178	78	445	400	12-Ø22	370	26	4	410	250	210	78	305	57.9
350	190	78	505	460	16-Ø22	430	26	4	445	285	281	120	406	81.6
400	216	102	565	515	16-Ø26	482	26	4	465	312	281	120	406	106
450	222	114	615	565	20-Ø26	532	28	4	524	354	281	120	406	147
500	229	127	670	620	20-Ø26	585	28	4	596	404	365	146	400	165
600	267	154	780	725	20-Ø30	685	30	5	696	473	365	146	400	235
700	292	165	895	840	24-Ø30	800	35	5	706	520	365	146	400	338
800	318	190	1015	950	24-Ø33	905	38	5	816	600	525	305	400	475
900	330	203	1115	1050	28-Ø33	1005	38	5	852	628	525	305	400	595
1000	410	216	1230	1160	24-Ø36	1110	44	5	936	705	525	305	400	794
1200	470	254	1455	1380	28-Ø39	1330	55	5	1112	830	590	413	400	1290



CHINA GATE GENERAL TRADING

تشاينا غيت للتجارة العامة

ALL TYPES OF PIPES, FITTINGS, & VALVES

CJD341X-16, CJD371X-16

DN	L	L1	D	K	N-Ø	d	C	f	H	Ho	A	B	Do	Weight (Kg)
200	152	60	340	295	12-Ø22	268	24	3	351	200	325	66	305	41.8
250	165	68	405	355	12-Ø26	320	26	3	384	231	315	78	305	54.7
300	178	78	460	410	12-Ø26	378	28	4	415	269	281	120	406	67.9
350	190	78	520	470	16-Ø26	438	30	4	452	298	281	120	406	91.6
400	216	102	580	525	16-Ø30	490	32	4	531	331	317	146	400	126
450	222	114	640	585	16-Ø30	550	34	4	562	369	317	146	400	177
500	229	127	715	650	16-Ø33	610	36	4	596	404	317	146	400	185
600	267	154	840	770	16-Ø36	725	40	5	696	473	525	305	400	235
700	292	165	910	840	20-Ø36	795	40	5	749	538	525	305	400	378
800	318	190	1025	950	20-Ø39	900	41	5	829	615	525	305	400	525
900	330	203	1125	1050	24-Ø39	1000	48	5	925	700	590	413	400	655

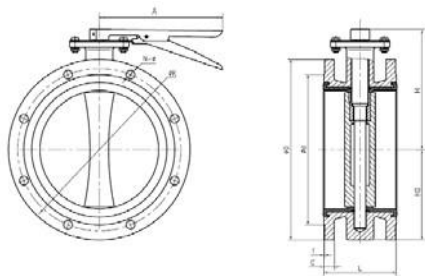
Concentric Rubber Seated Butterfly Valve



CHINA GATE GENERAL TRADING

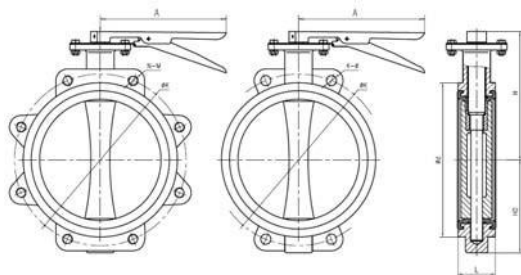
تشاينا غيت للتجارة العامة

ALL TYPES OF PIPES, FITTINGS, & VALVES



CJD41X-CL150

NPS	L	D	K	N-Ø	d	C	f	H	Ho	A	Weight (Kg)
2	108	150	120.5	4-Ø18	92	16	2	120	85	260	8.3
2.5	112	180	139.5	4-Ø18	105	17.5	2	153	104	260	11.2
3	114	190	152.5	4-Ø18	127	19.5	2	163	114	260	13.6
4	127	230	190.5	8-Ø18	157.5	24	2	182	140	260	14.8
5	140	255	216	8-Ø22	186	24	2	260	183	350	20.2
6	140	280	241.5	8-Ø22	216	25.5	2	280	202	400	24.7



CJD71X-CL150, CJD7T1X-CL150

NPS	L	K	N-M	4-Ø	d	C	f	H	Ho	A	Weight (Kg)
2	43	120.5	4-M16	Ø18	92	16	2	120	85	260	3.8
2.5	46	139.5	4-M16	Ø18	105	17.5	2	153	104	260	4.2
3	46	152.5	4-M16	Ø18	127	19.5	2	163	114	260	4.7
4	52	190.5	8-M16	Ø18	157.5	24	2	182	140	260	9.0
5	56	216	8-M20	Ø22	186	24	2	260	183	350	10.9
6	56	241.5	8-M20	Ø22	216	25.5	2	280	202	400	14.2

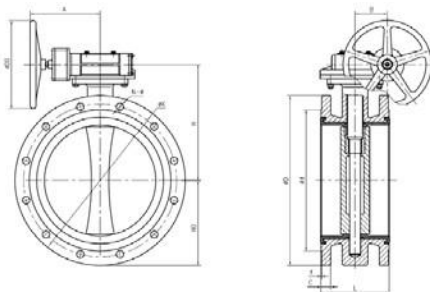


CHINA GATE GENERAL TRADING

تشاينا غيت للتجارة العامة

ALL TYPES OF PIPES, FITTINGS, & VALVES

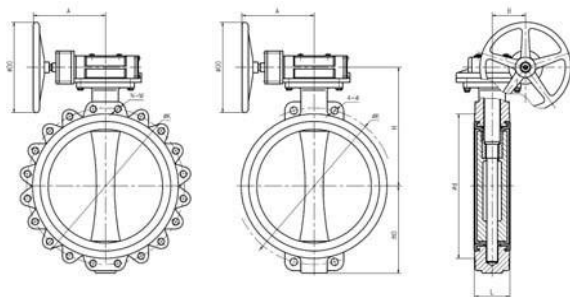
Concentric Rubber Seated Butterfly Valve



CJD341X-16, CJD371X-16

NPS	L	D	K	N-Ø	d	C	f	H	Ho	A	B	DO	Weight (Kg)
8	152	345	298.5	8-Ø22	270	29	2	351	200	325	66	305	58
10	165	405	362	8-Ø26	324	30.5	2	384	231	315	78	305	67
12	178	485	432	8-Ø26	381	32	2	415	269	281	120	406	78
14	190	535	476	8-Ø29.5	413	35	2	452	298	281	120	406	105
16	216	600	540	12-Ø29.5	470	37	2	531	331	317	146	400	146
18	222	635	578	12-Ø32.5	533.5	40	2	562	369	317	146	400	197
20	229	700	635	16-Ø32.5	584.5	43	2	596	404	317	146	400	255
24	267	815	749.5	16-Ø35.5	692.5	48	2	696	473	525	305	400	320

08



CJD371X-CL150, CJD37T1X-CL150

NPS	L	K	N-M	4-Ø	d	C	f	H	Ho	A	B	DO	Weight (Kg)
8	64	298.5	8-M20	Ø22	270	29	2	351	200	325	66	305	16.8
10	71	362	8-M24	Ø26	324	30.5	2	384	231	315	78	305	18.2
12	81	432	8-M24	Ø26	381	32	2	415	269	281	120	406	40
14	92	476	8-M27	Ø29.5	413	35	2	452	298	281	120	406	56
16	102	540	12-M27	Ø29.5	470	37	2	531	331	317	146	400	96
18	114	578	12-M30	Ø32.5	533.5	40	2	562	369	317	146	400	122
20	127	635	16-M30	Ø32.5	584.5	43	2	596	404	317	146	400	202
24	154	749.5	16-M33	Ø35.5	692.5	48	2	696	473	525	305	400	270



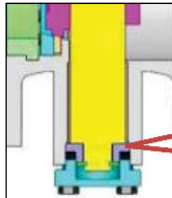
DTD Tri-eccentric Metal Sealed Butterfly Valves

I. Structure & Features

DTD tri-eccentric metal seated butterfly valves are widely utilized in fields of petroleum, chemical, metallurgy, electric power, municipal construction, etc., for the purpose of shut-off and adjustment. Furthermore, the sealing face is adjustable and replaceable which can promote the production and prolong the service life.



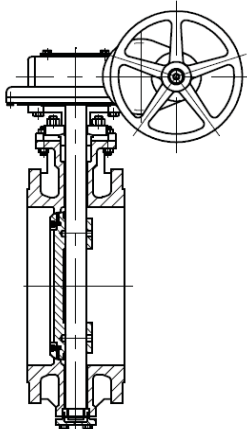
1. Tri-eccentric structure facilitates an immediate opening or closing with least friction



2. With the floating seal, the seal ring can properly self-adjust its position by the valve closing press so as to bring the disc in fully contact with the seat and realize an even seal pressure ratio and zero leakage.

3. The position device along the stem eliminates leakage problem due to the damage of the seal faces resulting from axial vertical movement of the disc.

II. Specification



	European System PN		American System Class	
Nominal Diameter	DN80 ~ DN3000		NPS3 ~ NPS48	
Nominal Pressure	PN6~PN100		CL150 ~CL600	
Designing standard	EN593		ASME B16.34	
Flange standard	EN1092-1		ASME B16.5 ASME B16.47	
Welding standard	EN12627		ASME B16.25	
Face to Face dimension	EN558.1		API 609 Short series	
Pressure test	EN12266-1		API 598	
Shell test			1.5×CWP	
Seal test (water)			1.1×CWP	
Seal test (air)			0.6MPa	
Body material	Carbon steel Low temp. steel		Alloy steel	Stainless steel
Working temp.°C	-29~425	-73~343	-29~570	-29~180 -196~600
Working Medium	Water, steam, gas, oil etc.		Corrosion	Low temp., High temp. media



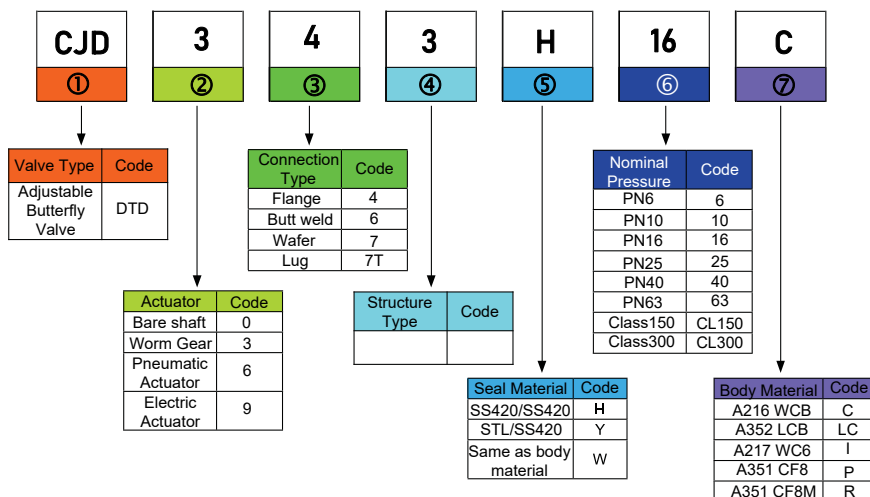
CHINA GATE GENERAL TRADING

تشاينا غيت للتجارة العامة

ALL TYPES OF PIPES, FITTINGS, & VALVES

DTD Tri-eccentric Metal Seated Butterfly Valves

III. Coding System



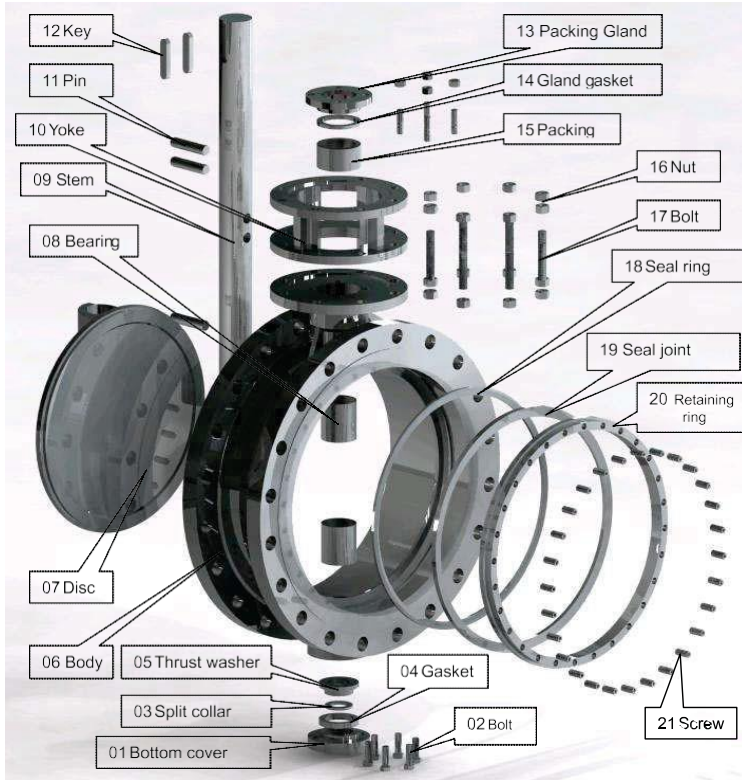
10

IV. Material Selection

	Valve Material	Carbon steel C		Low temperature Carbon Steel LC		Alloy Steel I		CrNi Stainless steel P		CrNiMo Stainless Steel R	
		A570 Gr. A	A350 LF2	A350 LF2	A182 F11	A182 F304	A182 F316	A182 F304	A182 F316	A182 F304	A182 F316
Spare Parts	01 Bottom Flange	A570 Gr. A	A350 LF2	A350 LF2	A182 F11	A182 F304	A182 F316	A182 F304	A182 F316	A182 F304	A182 F316
	02 Nut	A193 B7	A320 L7	A193 B16	A193 B8	A193 B8M	A193 B8M	A193 B8	A193 B8M	A193 B8	A193 B8M
	03 Split collar	A276 420	A276 420	A276 420	A276 420	A276 304	A276 316	A276 304	A276 316	A276 304	A276 316
	04 Gasket	Graphite Packing	Graphite Packing	Graphite Packing	Graphite Packing	Graphite Packing	Graphite Packing	Graphite Packing	Graphite Packing	Graphite Packing	Graphite Packing
	05 Thrust washer	A276 420	A276 420	A276 420	A276 420	A276 304	A276 316	A276 304	A276 316	A276 304	A276 316
	06 Body	A216 WCB/ A570 Gr. A	A352 LCB/ A350 LF2	A217 WC6	A351 CF8/ A276 304	A351 CF8M/ A276 316	A351 CF8M/ A276 316	A351 CF8/ A276 304	A351 CF8M/ A276 316	A351 CF8/ A276 304	A351 CF8M/ A276 316
	07 Disc	A216 WCB/ A105	A352 LCB/ A350 LF2	A217 WC6	A351 CF8/ A276 304	A351 CF8M/ A276 316	A351 CF8M/ A276 316	A351 CF8/ A276 304	A351 CF8M/ A276 316	A351 CF8/ A276 304	A351 CF8M/ A276 316
	08 Bearing	JF800	JF800	6370 (AMS)	SF-1S	SF-1SS	SF-1SS	SF-1S	SF-1SS	SF-1S	SF-1SS
	09 Stem	A276 420	A276 420	6370 (AMS)	A276 301	A705 630	A705 630	A276 301	A705 630	A276 301	A705 630
	10 Yoke	A216 WCB	A216 WCB	A216 WCB	A216 WCB	A216 WCB	A216 WCB	A216 WCB	A216 WCB	A216 WCB	A216 WCB
	11 Pin	A108 Gr.1045	A108 Gr.1045	A108 Gr.1045	A276 301	A564 630	A564 630	A276 301	A564 630	A276 301	A564 630
	12 Key	A108 Gr.1045	A108 Gr.1045	A108 Gr.1045	A108 Gr.1045	A108 Gr.1045	A108 Gr.1045	A108 Gr.1045	A108 Gr.1045	A108 Gr.1045	A108 Gr.1045
	13 Packing Gland	A216 WCB/ A570 Gr. A	A216 WCB/ A570 Gr. A	A217 WC6	A351 CF8/ A276 304	A351 CF8/ A276 304	A351 CF8/ A276 304	A351 CF8/ A276 304	A351 CF8/ A276 304	A351 CF8/ A276 304	A351 CF8/ A276 304
	14 Gland gasket	A276 420	A276 420	A276 420	A276 321	A276 321	A276 321	A276 321	A276 321	A276 321	A276 321
	15 Packing	Graphite Packing	Graphite Packing	Graphite Packing	Graphite Packing	Graphite Packing	Graphite Packing	Graphite Packing	Graphite Packing	Graphite Packing	Graphite Packing
	16 Nut	A194 2H	A194 2H	A194 7	A194 8	A194 8M	A194 8M	A194 8	A194 8M	A194 8	A194 8M
	17 Bolt	A193 B7	A320 L7	A193 B16	A193 B8	A193 B8M	A193 B8M	A193 B8	A193 B8M	A193 B8	A193 B8M
	18 Seal ring	A240	A240	A240	A240	A240	A240	A240	A240	A240	A240
		301+Graphite	301+Graphite	301+Graphite	304+Graphite	316+Graphite	316+Graphite	304+Graphite	316+Graphite	304+Graphite	316+Graphite
	19 Seal joint	A570 Gr. A	A350 LF2	A276 304	A276 304	A276 316	A276 316	A276 304	A276 316	A276 304	A276 316
	20 Retaining ring	A570 Gr. A	A350 LF2	A276 304	A276 304	A276 316	A276 316	A276 304	A276 316	A276 304	A276 316
	21 Screw	A193 B7	A320 L7	A193 B16	A194 B8	A194 B8M	A194 B8M	A194 B8	A194 B8M	A194 B8	A194 B8M

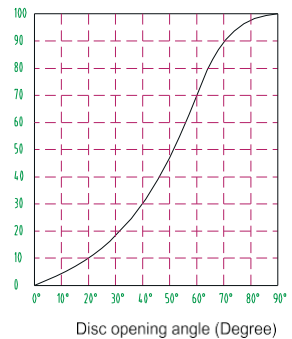


V. Disassembled View



VI. Discharge Parameter Diagram

DN	80	100	125	150	200	250	300
NPS	3	4	5	6	8	10	12
Discharge parameter Cv	150	250	400	760	1360	2220	3600
DN	350	400	450	500	600	700	750
NPS	14	16	18	20	24	28	30
Discharge parameter Cv	5200	7200	9600	12550	18960	27000	31500
DN	800	900	1000	1100	1200	1400	1600
NPS	32	36	40	44	48	56	64
Discharge parameter Cv	36000	45000	57000	69000	82500	117000	176000
DN	1800	2000	2200	2400	2600	2800	3000
NPS	72	80	88	96	104	112	120
Discharge parameter Cv	250000	380000	460000	550000	640000	740000	850000





CHINA GATE GENERAL TRADING

تشاينا غيت للتجارة العامة

ALL TYPES OF PIPES, FITTINGS, & VALVES

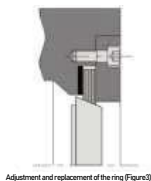
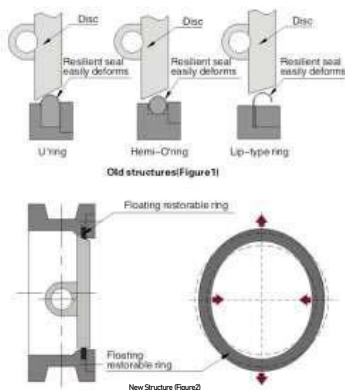
DTD Tri-eccentric Metal Seated Butterfly Valves

Creating the Miracle of Zero Leakage Under High Temperature Condition

Comparison between new and old structures

Nowadays, the sealing structures of metal-seated butterfly valves mainly comprises U-type, Hemi-O-ring type and lip-type, which all have three disadvantages as follows:

- (1). The seat rings are formed by press processes and leakage at high temperature;
- (2). The seal material is over-hardened in the heat treatment and has insufficient elasticity and increased brittleness as well, thus the seat ring will be easily broken for the fatigue resulted from repeated squeezing by the disc and long use at low temperature;
- (3). The above three rings are directly made by press and thus only suitable for small bore valves; the ones for big bore valves are manufactured through press, shape-setting and welding processes, which may produce stress deformation and leakage from an uneven connection welding, significantly affecting the service life (See Figure 1 for details). Triple Eccentric Metal-seated Butterfly Valve absorbs the advantages in this field and holds its unique construct characteristics; floating seal ring is adopted and the seal ring is capable of self-adjustment by the pressure of disc when closing so as to compensate the possible deformation of heat expansion under different working conditions (e.g., High temperature) to avoid damage to the seal face, resulting an even contact pressure ratio, a long service life and an improved [the] metal sealing. So, the seal leakage problem as a result of temperature changes is solved completely (See Figure 2 for details).

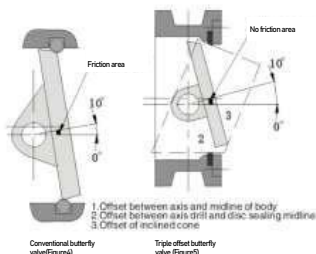


Seal Ring adjustable & replaceable to prolong the service life

Conventional butterfly valves will be discarded for being useless when leakage occurs due to wearing, which is not economical. The present valve adopts a floating sealing structure embedded into the valve body, whose seal ring can be adjusted to approach the disc and resume the normal seal ability if the seal ring ability decreases due to long-run use. Meanwhile, the valve can be repaired more conveniently because the seal ring can be demounted for replacement on the spot without special tools (See Figure 3 for details).

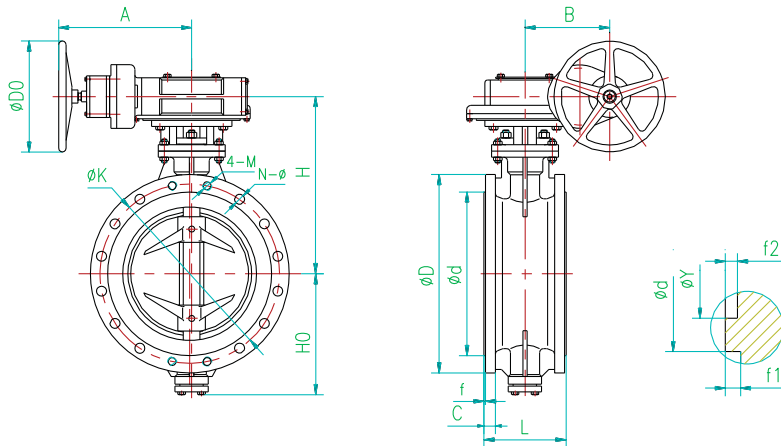
Separated immediately when opening and sealed immediately when closing

At present, the duo-eccentric structure for the metal-seated butterfly valve is widely used in order to enable the spherical or conical surface of the disc separate quickly from the seat and to decrease the frictional torque force when opening. However, at an angle of 0-10 degree, the disc always contacts the seat with a sliding friction, so the instant torque force increases significantly at the instant moment that the traditional valve is opening, resulting severe problems such as seal face scraping, biting damage and leakage adjacent to the stem ends (See Figure 4 for details). DTD metal-seated butterfly valve completely solves the above sliding wearing problems encountered at an angle 0-10 degree during opening in the conventional butterfly valves. This butterfly valve adopts one duo-c-centric structure plus one special oblique-conical elliptic sealing structure to enable the seal face to open or close immediately at the instant moment that the disc is opening or closing. Thanks to such a structure, the frictional torque force decreases substantially, a long service life is guaranteed, easy opening or closing is realized, thus it has no problem to substitute heavy and expensive gate valve, globe valve, ball valve, throttle valve, etc. With 80% lighter in weight, 70% smaller in volume and 40% lower in price average (See Figure 5 for more details).





VII. Dimension Drawing



DTD343H-6

DN	L	D	K	N-Ø	4-M	d	C	f	H	Ho	A	B	Do	Weight(Kg)
80	114	190	150	4-Ø18	-	128	16	3	215	-	195	45	152	30
100	127	210	170	4-Ø18	-	148	16	3	230	-	195	45	152	38
125	140	240	200	8-Ø18	-	178	18	3	246	-	195	45	152	45
150	140	265	225	8-Ø18	-	202	20	3	297	155	325	66	305	48
200	152	320	280	8-Ø18	-	258	22	3	332	200	325	66	305	63
250	165	375	335	12-Ø18	-	312	22	3	375	231	325	66	305	83
300	178	440	395	12-Ø22	-	365	22	4	410	250	210	78	305	125
350	190	490	445	12-Ø22	-	415	22	4	445	285	281	120	406	148
400	216	540	495	16-Ø22	-	465	22	4	465	319	365	120	406	242
450	222	595	550	16-Ø22	-	520	22	4	524	354	365	120	406	279
500	229	645	600	20-Ø22	-	570	24	4	596	404	365	146	400	334
600	267	755	705	20-Ø26	-	670	30	5	696	473	525	146	400	527
700	292	860	810	24-Ø26	-	775	30	5	706	520	525	146	400	652
800	318	975	920	24-Ø30	-	880	30	5	816	600	525	305	400	744
900	330	1075	1020	24-Ø30	-	980	34	5	852	628	525	305	400	900
1000	410	1175	1120	24-Ø30	M27	1080	38	5	936	705	590	305	400	1451
1200	470	1405	1340	28-Ø33	M30	1295	42	5	1112	830	590	413	400	1978
1400	530	1630	1560	32-Ø36	M33	1510	56	5	1223	985	590	413	400	2688
1600	600	1830	1760	36-Ø36	M33	1710	63	5	1442	1080	698	425	650	4405
1800	670	2045	1970	40-Ø39	M36	1920	69	5	1626	1253	698	425	650	5672
2000	760	2265	2180	44-Ø42	M39	2125	74	5	1723	1332	698	425	650	7257
2200	800	2475	2390	48-Ø42	M39	2335	81	5	1981	1541	698	425	650	8031
2400	850	2685	2600	52-Ø42	M39	2545	87	5	2060	1596	865	560	650	10046
2600	900	2905	2810	56-Ø48	M45	2750	91	5	2202	1755	865	560	650	11310
2800	950	3115	3020	60-Ø48	M45	2960	101	5	2345	1915	865	560	650	13500
3000	1000	3315	3220	64-Ø48	M45	3160	102	5	2478	1970	865	560	650	14500



CHINA GATE GENERAL TRADING

تشاينا غيت للتجارة العامة

ALL TYPES OF PIPES, FITTINGS, & VALVES

DTD Tri-eccentric Metal Seated Butterfly Valves

DTD 343H-10

DN	L	D	K	N-Ø	4-M	d	C	f	H	Ho	A	B	Do	Weight(Kg)
80	114	200	160	8-Ø18	-	138	20	3	215	-	195	45	152	33
100	127	220	180	8-Ø18	-	158	20	3	230	-	195	45	152	41
125	140	250	210	8-Ø18	-	188	22	3	246	-	195	45	152	49
150	140	285	240	8-Ø22	-	212	22	3	309	-	325	66	305	56
200	152	340	295	8-Ø22	-	268	24	3	331	-	325	66	305	69
250	165	395	350	12-Ø22	-	320	26	3	375	-	325	66	305	90
300	178	445	400	12-Ø22	-	370	26	4	410	250	210	78	305	129
350	190	505	460	16-Ø22	-	430	26	4	445	285	281	120	406	156
400	216	565	515	16-Ø26	-	482	26	4	465	312	281	120	406	256
450	222	615	565	20-Ø26	-	532	28	4	524	354	281	120	406	296
500	229	670	620	20-Ø26	-	585	28	4	596	404	365	146	400	351
600	267	780	725	20-Ø30	-	685	30	5	696	473	365	146	400	565
700	292	895	840	24-Ø30	-	800	35	5	706	520	365	146	400	704
800	318	1015	950	24-Ø33	-	905	38	5	816	600	525	305	400	889
900	330	1115	1050	28-Ø33	-	1005	38	5	852	628	525	305	400	1467
1000	410	1230	1160	24-Ø36	M33	1110	44	5	936	705	525	305	400	1601
1200	470	1455	1380	28-Ø39	M36	1330	55	5	1112	830	590	413	400	2207
1400	530	1675	1590	32-Ø42	M39	1535	65	5	1223	985	590	413	400	2969
1600	600	1915	1820	36-Ø48	M45	1760	75	5	1442	1080	698	425	650	4889
1800	670	2115	2020	40-Ø48	M45	1960	85	5	1626	1253	698	425	650	6854
2000	760	2325	2230	44-Ø48	M45	2170	90	5	1723	1332	698	425	650	8709
2200	800	2550	2440	48-Ø55	M52	2370	100	5	1981	1541	698	425	650	9637
2400	850	2760	2650	52-Ø55	M52	2570	110	5	2060	1596	865	560	650	12055
2600	900	2960	2850	56-Ø55	M52	2780	110	5	2202	1755	865	560	650	13572
2800	950	3180	3070	60-Ø55	M52	3000	124	5	2345	1915	865	560	650	16200
3000	1000	3405	3290	64-Ø60	M56	3210	132	5	2478	1970	865	560	650	17400

DTD343H-16

DN	L	D	K	N-Ø	4-M	d	C	f	H	Ho	A	B	Do	Weight(Kg)
80	114	200	160	8-Ø18	-	138	20	3	215	-	195	45	152	33
100	127	220	180	8-Ø18	-	158	20	3	230	-	195	45	152	41
125	140	250	210	8-Ø18	-	188	22	3	246	-	195	45	152	49
150	140	285	240	8-Ø22	-	212	22	3	309	-	325	66	305	56
200	152	340	295	12-Ø22	-	268	24	3	351	200	325	66	305	69
250	165	405	355	12-Ø26	-	320	26	3	384	231	315	78	305	93
300	178	460	410	12-Ø26	-	378	28	4	415	269	281	120	406	137
350	190	520	470	16-Ø26	-	438	30	4	452	298	281	120	406	170
400	216	580	525	16-Ø30	-	490	32	4	531	331	317	146	400	275
450	222	640	585	16-Ø30	M27	550	34	4	562	369	317	146	400	324
500	229	715	650	16-Ø33	M30	610	36	4	596	404	317	146	400	403
600	267	840	770	16-Ø36	M33	725	40	5	696	473	525	305	400	631
700	292	910	840	20-Ø36	M33	795	40	5	749	538	525	305	400	742
800	318	1025	950	20-Ø39	M36	900	41	5	829	615	525	305	400	929
900	330	1125	1050	24-Ø39	M36	1000	48	5	925	700	590	413	400	1511
1000	410	1255	1170	24-Ø42	M39	1115	59	5	1013	730	590	413	400	2106
1200	470	1485	1390	28-Ø48	M45	1330	78	5	1137	850	590	413	400	2905
1400	530	1685	1590	32-Ø48	M45	1530	84	5	1348	980	698	425	650	3917
1600	600	1930	1820	36-Ø55	M52	1750	102	5	1517	1155	698	425	650	6106
1800	670	2130	2020	40-Ø55	M52	1950	110	5	1680	1310	698	425	650	8560
2000	760	2345	2230	44-Ø60	M56	2150	124	5	1776	1438	698	425	650	10886



CHINA GATE GENERAL TRADING

تشاينا غيت للتجارة العامة

ALL TYPES OF PIPES, FITTINGS, & VALVES

DTD 343H-25

DN	L	D	K	N-Ø	4-M	d	C	f	H	Ho	A	B	Do	Weight(Kg)
80	114	200	160	8-Ø18	-	138	24	3	215	-	195	45	152	35
100	127	235	190	8-Ø22	-	162	24	3	230	-	195	45	152	46
125	140	270	220	8-Ø26	-	188	26	3	246	-	195	45	152	55
150	140	300	250	8-Ø26	-	218	28	3	309	-	325	66	305	60
200	152	360	310	8-Ø26	M24	278	30	3	351	200	325	66	305	81
250	165	425	370	8-Ø30	M27	335	32	3	384	231	315	78	305	109
300	178	485	430	12-Ø30	M27	395	34	4	415	269	281	120	406	158
350	190	555	490	12-Ø33	M30	450	38	4	452	298	281	120	406	205
400	216	620	550	12-Ø36	M33	505	40	4	531	331	317	146	400	321
450	222	670	600	16-Ø36	M33	555	46	4	562	369	317	146	400	382
500	229	730	660	16-Ø36	M33	615	48	4	596	404	317	146	400	457
600	267	845	770	16-Ø39	M36	720	48	5	696	473	525	305	400	680
700	292	960	875	20-Ø42	M39	820	50	5	757	538	525	305	400	851
800	318	1085	990	20-Ø48	M45	930	53	5	829	615	525	305	400	1088
900	330	1185	1090	24-Ø48	M45	1030	57	5	925	700	590	413	400	1703
1000	410	1320	1210	24-Ø55	M52	1140	63	5	1061	750	590	413	400	2665
1200	470	1530	1420	28-Ø55	M52	1350	70	5	1137	850	590	413	400	3722

DTD 343H-40

DN	L	D	K	N-Ø	4-M	d	C	f	H	Ho	A	B	Do	Weight(Kg)
80	180	200	160	8-Ø18	-	138	24	3	215	-	195	45	152	40
100	190	235	190	8-Ø22	-	162	24	3	230	-	195	45	152	52
125	200	270	220	8-Ø26	-	188	26	3	291	-	325	66	305	61
150	210	300	250	8-Ø26	-	218	28	3	315	-	325	66	305	72
200	230	375	320	12-Ø30	-	285	34	3	370	219	315	78	305	111
250	250	450	385	12-Ø33	-	345	38	3	422	261	281	120	406	161
300	270	515	450	16-Ø33	-	410	42	4	490	289	317	146	400	236
350	290	580	510	16-Ø36	-	465	46	4	528	320	317	146	400	322
400	310	660	585	16-Ø39	-	535	50	4	568	357	317	146	400	467
450	330	685	610	16-Ø39	M36	560	57	4	626	385	480	305	400	535
500	350	755	670	16-Ø42	M39	615	57	4	670	431	480	305	400	663
600	390	890	795	16-Ø48	M45	735	72	5	737	492	525	305	400	990
700	430	995	900	20-Ø48	M45	840	76	5	898	570	590	413	400	1234
800	470	1140	1030	20-Ø56	M52	960	80	5	995	685	590	413	400	1578

DTD 343H-63

DN	L	D	K	N-Ø	4-M	d	Y	C	f1	f2	H	Ho	A	B	Do	Weight(Kg)
80	180	215	170	8-Ø22	-	138	121	28	3	4	215	-	195	45	152	50
100	190	250	200	8-Ø26	-	162	150	30	3	4.5	230	-	195	45	152	58
125	200	295	240	8-Ø30	-	188	176	34	3	4.5	291	-	325	66	305	70
150	210	345	280	8-Ø33	-	218	204	36	3	4.5	384	185	281	120	406	85
200	230	415	345	8-Ø36	M33	285	260	42	3	4.5	419	216	281	120	406	153
250	250	470	400	8-Ø36	M33	345	313	46	3	4.5	474	290	317	146	400	212
300	270	530	460	12-Ø36	M33	410	364	52	4	4.5	537	338	480	305	400	308
350	290	600	525	12-Ø39	M36	465	422	56	4	5	541	360	316	146	400	417
400	310	670	585	12-Ø42	M39	535	474	60	4	5	630	391	480	305	400	584



CHINA GATE GENERAL TRADING

تشاينا غيت للتجارة العامة

ALL TYPES OF PIPES, FITTINGS, & VALVES

DTD 343H-100

DN	L	D	K	N-Ø	4-M	d	Y	C	f1	f2	H	Ho	A	B	Do	Weight(Kg)
80	180	230	180	4-Ø26	M24	138	121	32	3	4	269	140	325	66	305	65
100	190	265	210	4-Ø30	M27	162	150	36	3	4.5	301	150	325	66	305	76
125	200	315	250	4-Ø33	M30	188	176	40	3	4.5	335	178	281	120	406	91
150	210	355	290	8-Ø33	M30	218	204	44	3	4.5	370	185	281	120	406	110
200	230	430	360	8-Ø36	M33	285	260	52	3	4.5	443	227	317	146	400	199
250	250	505	430	8-Ø39	M36	345	313	60	3	4.5	488	294	317	146	400	276
300	270	585	500	12-Ø42	M39	410	364	68	4	4.5	537	338	480	305	400	400
350	290	655	560	12-Ø48	M45	465	422	74	4	5	606	358	525	305	400	542
400	310	715	620	12-Ø48	M45	535	474	82	4	5	671	420	525	305	400	760

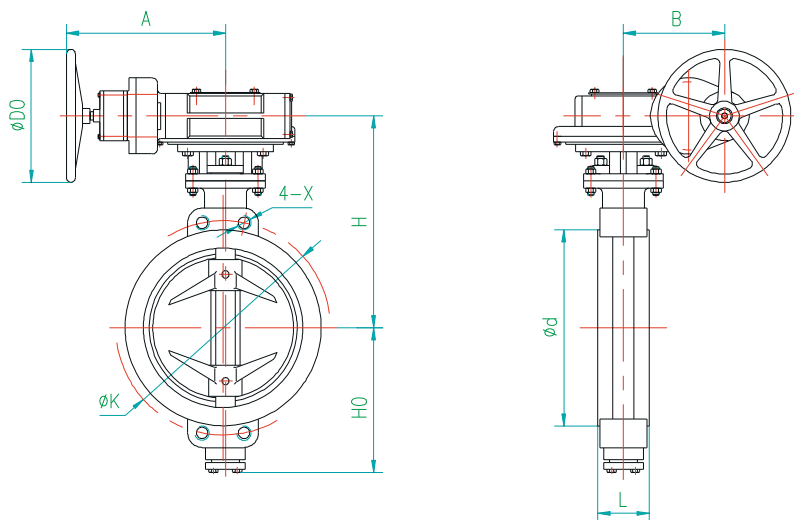
DTD Tri-eccentric Metal Seated Butterfly Valves



CHINA GATE GENERAL TRADING

تشاينا غيت للتجارة العامة

ALL TYPES OF PIPES, FITTINGS, & VALVES



DTD 373H-10

DN	L	K	4-X	d	H	Ho	A	B	Do	Weight (Kg)
80	49	160	Ø18	138	215	98	195	45	152	18
100	56	180	Ø18	158	230	112	195	45	152	20
125	64	210	Ø18	188	246	125	195	45	152	29
150	70	240	Ø22	212	309	155	325	66	305	37
200	71	295	M20	268	331	200	325	66	305	40
250	76	350	M20	320	375	231	325	66	305	53
300	83	400	M20	370	410	250	210	78	305	88
350	92	460	M20	430	445	285	281	120	406	110
400	102	515	M24	482	465	312	281	120	406	193
450	114	565	M24	532	524	354	281	120	406	231
500	127	620	M24	585	596	404	365	146	400	279
600	154	725	M27	685	696	473	365	146	400	458
700	165	840	M27	800	706	520	365	146	400	557
800	190	950	M30	905	816	600	525	305	400	712
900	203	1050	M30	1005	852	628	525	305	400	1244
1000	216	1160	M33	1110	936	705	525	305	400	1334
1200	254	1380	M36	1330	1112	830	590	413	400	1839



CHINA GATE GENERAL TRADING

تشاينا غيت للتجارة العامة

ALL TYPES OF PIPES, FITTINGS, & VALVES

DTD Tri-eccentric Metal Seated Butterfly Valves

DTD373H-16

DN	L	K	4-X	d	H	Ho	A	B	Do	Weight (Kg)
80	49	160	Ø18	138	215	98	195	45	152	18
100	56	180	Ø18	158	230	112	195	45	152	20
125	64	210	Ø18	188	246	125	195	45	152	29
150	70	240	Ø22	212	309	155	325	66	305	37
200	71	295	M20	268	351	200	325	66	305	42
250	76	355	M24	320	384	231	315	78	305	55
300	83	410	M24	378	415	269	281	120	406	90
350	92	470	M24	438	452	298	281	120	406	113
400	102	525	M27	490	531	331	317	146	400	198
450	114	585	M27	550	562	369	317	146	400	247
500	127	650	M30	610	596	404	317	146	400	309
600	154	770	M33	725	696	473	525	305	400	519
700	165	840	M33	795	749	538	525	305	400	577
800	190	950	M36	900	829	615	525	305	400	732
900	203	1050	M36	1000	925	700	590	413	400	1264
1000	216	1170	M39	1115	1013	730	590	413	400	1354

DTD 373H-25

DN	L	K	4-X	d	H	Ho	A	B	Do	Weight (Kg)
80	49	160	Ø18	138	215	98	195	45	152	20
100	56	190	Ø22	162	230	112	195	45	152	22
125	64	220	Ø26	188	246	125	195	45	152	31
150	70	250	Ø26	218	309	155	325	66	305	39
200	71	310	M24	278	351	200	325	66	305	44
250	76	370	M27	335	384	231	315	78	305	59
300	83	430	M27	395	415	269	281	120	406	99
350	92	490	M30	450	452	298	281	120	406	124
400	102	550	M33	505	531	331	317	146	400	215
450	114	600	M33	555	562	369	317	146	400	277
500	127	660	M33	615	596	404	317	146	400	340
600	154	770	M36	720	696	473	525	305	400	550
700	165	875	M39	820	757	538	525	305	400	628
800	190	990	M45	930	829	615	525	305	400	801
900	203	1090	M45	1030	925	700	590	413	400	1346

DTD373H-40

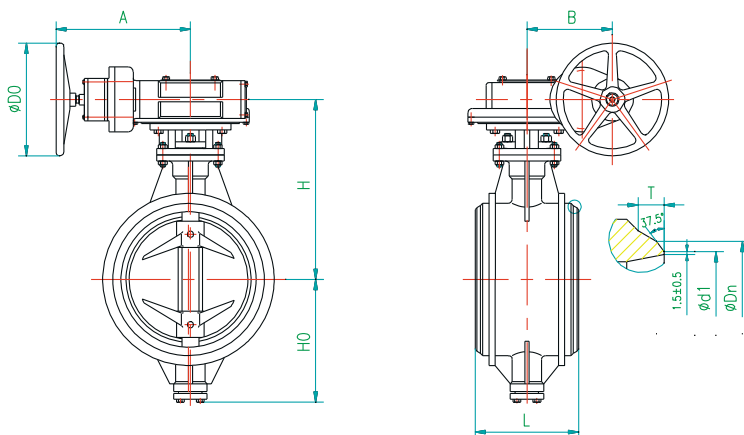
DN	L	K	4-X	d	H	Ho	A	B	Do	Weight (Kg)
80	49	—	—	138	215	98	195	45	152	20
100	56	—	—	162	230	112	195	45	152	30
125	70	—	—	188	291	125	325	66	305	35
150	76	250	Ø26	218	315	165	325	66	305	40
200	89	320	M27	285	370	219	315	78	305	60
250	114	385	M30	345	422	261	281	120	406	80
300	114	450	M30	410	490	289	365	146	400	110
350	127	510	M33	465	528	320	365	146	400	150
400	140	585	M36	535	568	357	365	146	400	200
450	152	610	M36	560	626	385	525	305	400	230
500	152	670	M39	615	670	431	525	305	400	334
600	178	795	M45	735	737	492	525	305	400	585



CHINA GATE GENERAL TRADING

تشاينا غيت للتجارة العامة

ALL TYPES OF PIPES, FITTINGS, & VALVES



DTD 363H-16 DTD 363H-25

DN	L	DN	d1	T	H	Ho	A	B	Do	Weight (Kg)
80	180	92	85	6	215	98	195	45	152	30
100	190	114	105	6	230	112	195	45	152	37
125	200	138	130	6	246	125	195	45	152	44
150	210	159	152	6	309	155	325	66	305	51
200	230	219	207	9	351	200	325	66	305	62
250	250	274	258	9	384	231	315	78	305	84
300	270	325	313	9	415	269	281	120	406	124
350	290	377	365	9	452	298	281	120	406	153
400	310	426	414	9	531	331	317	146	400	248
450	330	478	466	9	562	369	317	146	400	292
500	350	529	517	9	596	404	317	146	400	363
600	390	630	614	9	696	473	525	305	400	568
700	430	720	702	14	757	538	525	305	400	668
800	470	820	802	14	829	615	525	305	400	836
900	510	920	902	14	925	700	590	413	400	1360
1000	550	1020	1000	15	1013	730	590	413	400	1896
1200	630	1220	1200	15	1137	850	590	413	400	2615
1400	710	1420	1400	15	1348	980	698	425	650	3525
1600	790	1620	1600	18	1517	1155	698	425	650	5496



CHINA GATE GENERAL TRADING

تشاينا غيت للتجارة العامة

ALL TYPES OF PIPES, FITTINGS, & VALVES

DTD Tri-eccentric Metal Seated Butterfly Valves

DTD 363H-40

DN	L	DN	d1	T	H	Ho	A	B	Do	Weight (Kg)
80	180	92	85	6	215	98	195	45	152	30
100	190	114	105	6	230	112	195	45	152	37
125	200	138	130	6	246	125	325	66	305	44
150	210	159	152	6	309	155	325	66	305	58
200	230	219	207	9	370	219	315	78	305	78
250	250	274	258	9	422	261	281	120	406	113
300	270	325	313	9	490	289	317	146	400	165
350	290	377	365	9	528	320	317	146	400	225
400	310	426	414	9	568	357	317	146	400	327
450	330	480	466	9	626	385	480	305	400	375
500	350	529	517	9	670	431	480	305	400	464
600	390	630	614	9	737	492	525	305	400	693

DTD 363H-63

DN	L	DN	d1	T	H	Ho	A	B	Do	Weight (Kg)
80	180	92	85	6	215	90	195	45	152	21
100	190	114	105	6	230	112	195	45	152	25
125	200	138	130	6	291	124	210	66	305	35
150	210	159	152	6	384	185	281	120	406	58
200	230	219	207	9	399	216	281	120	406	75
250	250	274	258	9	474	290	365	146	400	103
300	270	325	313	9	537	338	365	146	400	172
350	290	377	365	9	541	360	365	146	400	231
400	310	426	414	9	630	391	525	305	400	299
450	330	480	466	9	664	431	525	305	400	380
500	350	529	517	9	678	481	525	305	400	546
600	390	630	614	9	757	582	590	413	400	763

DTD 363H-100

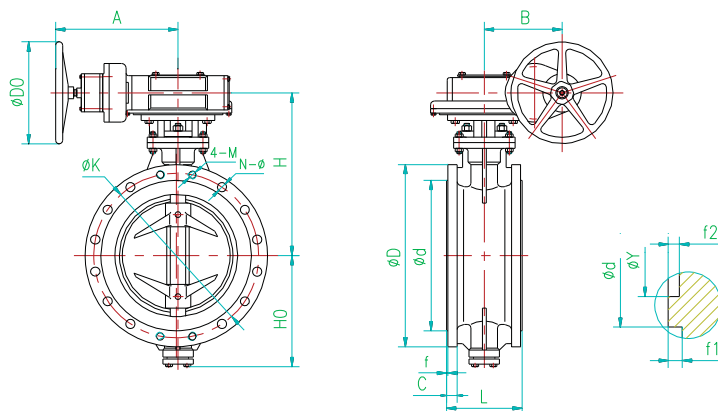
DN	L	DN	d1	T	H	Ho	A	B	Do	Weight (Kg)
80	180	92	85	6	215	90	195	45	152	21
100	190	114	105	6	230	112	195	45	152	25
125	200	138	130	6	291	124	210	66	305	35
150	210	159	152	6	370	185	281	120	406	58
200	230	219	207	9	443	227	365	146	400	92
250	250	274	258	9	488	294	365	146	400	122
300	270	325	313	9	537	338	365	146	400	191
350	290	377	365	9	606	358	525	305	400	273
400	310	426	414	9	671	420	525	305	400	403
450	330	480	466	9	734	453	525	305	400	508
500	350	529	517	9	796	485	590	413	400	685
600	390	630	614	9	875	575	590	413	400	945



CHINA GATE GENERAL TRADING

تشاينا غيت للتجارة العامة

ALL TYPES OF PIPES, FITTINGS, & VALVES



DTD343H-CL150

NPS	L	D	K	N-Ø	4-M	d	C	f	H	Ho	A	B	Do	Weight (Kg)
3	114	190	152.5	4-Ø18	-	127	19.5	2	215	-	195	45	152	35
4	127	230	190.5	8-Ø18	-	157.5	24	2	230	-	195	45	152	46
5	140	255	216	8-Ø22	-	186	24	2	246	-	195	45	152	55
6	140	280	241.5	8-Ø22	-	216	25.5	2	309	-	325	66	305	60
8	152	345	298.5	8-Ø22	-	270	29	2	351	200	325	66	305	81
10	165	405	362	8-Ø26	M24	324	30.5	2	384	231	315	78	305	109
12	178	485	432	8-Ø26	M24	381	32	2	415	269	281	120	406	158
14	190	535	476	8-Ø29.5	M27	413	35	2	452	298	281	120	406	205
16	216	600	540	12-Ø29.5	M27	470	37	2	531	331	317	146	400	321
18	222	635	578	12-Ø32.5	M30	533.5	40	2	562	369	317	146	400	382
20	229	700	635	16-Ø32.5	M30	584.5	43	2	596	404	317	146	400	457
24	267	815	749.5	16-Ø35.5	M33	692.5	48	2	696	473	525	305	400	680
28	292	927	863.5	24-Ø36	M33	800	71	2	757	538	525	305	400	936
32	318	1060	978	24-Ø42	M39	914	81	2	829	615	525	305	400	1197
36	330	1170	1086	28-Ø42	M39	1022	91	2	925	700	590	413	400	1873
40	410	1289	1200	32-Ø42	M39	1124	90	2	1023	730	590	413	400	2931

DTD343H-CL300

NPS	L	D	K	N-Ø	4-M	d	C	f	H	Ho	A	B	Do	Weight (Kg)
3	180	210	168.5	8-Ø22	-	127	29	2	215	-	195	45	152	45
4	190	255	200	8-Ø22	-	157.5	32	2	230	-	195	45	152	61
5	200	280	235	8-Ø22	-	186	35	2	291	-	325	66	305	79
6	210	320	270	12-Ø22	-	216	37	2	315	-	325	66	305	91
8	230	380	330	12-Ø26	-	270	41.5	2	370	219	315	78	305	131
10	250	445	387.5	12-Ø29.5	M27	324	48	2	422	261	281	120	406	189
12	270	520	451	12-Ø32.5	M30	381	51	2	490	289	317	146	400	281
14	290	585	514.5	16-Ø32.5	M30	413	54	2	528	320	317	146	400	383
16	310	650	571.5	16-Ø35.5	M33	470	57.5	2	570	357	317	146	400	558
18	330	710	628.5	20-Ø35.5	M33	533.5	60.5	2	626	385	480	305	400	640
20	350	775	686	20-Ø35.5	M33	584.5	63.5	2	670	431	418	305	400	794
24	390	915	813	20-Ø42	M39	692.5	70	2	737	492	525	305	400	1186

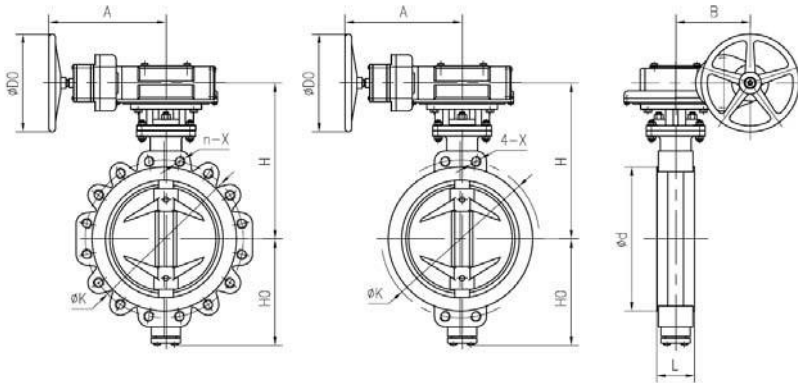


CHINA GATE GENERAL TRADING

تشاينا غيت للتجارة العامة

ALL TYPES OF PIPES, FITTINGS, & VALVES

DTD Tri-eccentric Metal Seated Butterfly Valves



DTD 373H-CL150, DTD 37T3H-CL150

NPS	L	K	n-X	d	H	Ho	A	B	Do	Weight (Kg)
3	48	152.5	4-M16	127	215	98	195	45	152	19
4	54	190.5	8-M16	157.5	230	112	195	45	152	22
5	57	216	8-M20	186	246	125	195	45	152	29
6	57	241.5	8-M20	216	309	155	325	66	305	36
8	64	298.5	8-M20	270	351	200	325	66	305	42
10	71	362	8-M24	324	384	231	315	78	305	57
12	81	432	8-M24	381	415	269	281	120	406	99
14	92	476	8-M27	413	452	298	281	120	406	122
16	102	540	12-M27	470	531	331	317	146	400	213
18	114	578	12-M30	533.5	562	369	317	146	400	274
20	127	635	16-M30	584.5	596	404	317	146	400	335
24	154	749.5	16-M33	692.5	696	473	525	305	400	545

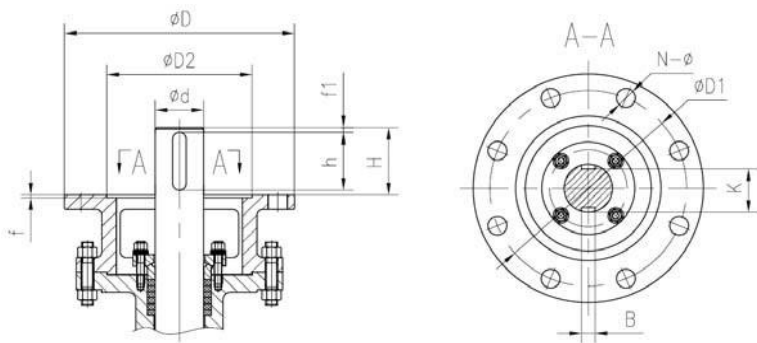
DTD373H-CL300, DTD 37T3H-CL300

NPS	L	K	n-X	d	H	Ho	A	B	Do	Weight (Kg)
3	48	168.5	8-M20	127	215	98	195	45	152	28
4	54	200	8-M20	157.5	230	112	195	45	152	38
5	59	235	8-M20	186	291	125	325	66	305	50
6	59	270	12-M20	216	315	155	325	66	305	57
8	73	330	12-M24	270	370	219	315	78	305	81
10	83	387.5	12-M27	324	422	261	281	120	406	118
12	92	451	12-M30	381	490	289	317	146	400	200
14	119	514.5	16-M30	413	528	320	317	146	400	255
16	133	571.5	16-M33	470	570	357	317	146	400	372
18	149	628.5	20-M33	533.5	626	385	480	305	400	426
20	159	686	20-M33	584.5	670	431	418	305	400	529
24	181	813	20-M39	692.5	737	592	525	305	400	790



Top Flange Connecting Size

Listed in the following charts, those data according to standard are only for your reference. Any charge or revision can be made without extra notice.



Applicable scope: Flange type valve: PN6

DN	NPS	d	D	D1	D2	f	N-Ø	H	h	f1	B	K	ISO	Torque (N.m)
80	3	22	125	102	70	3	4- Ø12	33	30	3	6	18.5	F10	22
100	4	22	125	102	70	3	4- Ø12	3	30	3	6	18.5	F10	37
125	5	22	125	102	70	3	4- Ø12	33	30	3	6	18.5	F10	55
150	6	24	150	125	85	3	4- Ø14	36	30	3	8	20	F12	83
200	8	24	150	125	85	3	4- Ø14	36	30	3	8	20	F12	190
250	10	28	150	125	85	3	4- Ø14	42	30	3	8	24	F12	320
300	12	32	175	140	100	4	4- Ø18	48	40	3	10	27	F14	520
350	14	36	175	140	100	4	4- Ø18	54	50	3	10	31	F14	870
400	16	40	210	165	130	5	4- Ø22	60	50	3	12	35	F16	1230
450	18	44	300	254	200	5	8- Ø18	66	50	3	12	39	F25	1630
500	20	50	300	254	200	5	8- Ø18	70	60	5	14	44.5	F25	2140
600	24	60	300	254	200	5	8- Ø18	80	70	5	18	53	F25	3600
700	28	70	350	298	230	5	8- Ø22	80	70	5	20	62.5	F30	4480
800	32	80	350	298	230	5	8- Ø22	110	100	5	22	71	F30	6640
900	36	90	350	298	230	5	8- Ø22	110	100	5	25	81	F30	8900
1000	40	100	350	298	230	5	8- Ø22	130	120	10	28	90	F30	13400
1200	48	120	475	406	300	8	8- Ø39	180	160	5	32	109	F40	22200
1400	56	140	475	406	300	8	8- Ø39	190	180	10	36	128	F40	33600
1600	64	160	560	483	370	8	12- Ø39	200	180	10	40	147	F48	48900



CHINA GATE GENERAL TRADING

تشاينا غيت للتجارة العامة

ALL TYPES OF PIPES, FITTINGS, & VALVES

DTD Tri-eccentric Metal Seated Butterfly Valves

Flange type valve: PN10

DN	NPS	d	D	D1	D2	f	N-Ø	H	h	f1	B	K	ISO	Torque (N.m)
80	3	22	125	102	70	3	4- Ø12	33	30	3	6	18.5	F10	37
100	4	22	125	102	70	3	4- Ø12	33	30	3	6	18.5	F10	63
125	5	22	125	102	70	3	4- Ø12	33	30	3	6	18.5	F10	94
150	6	24	150	125	85	3	4- Ø14	36	30	3	8	20	F12	140
200	8	24	150	125	85	3	4- Ø14	36	30	3	8	20	F12	280
250	10	28	150	125	85	3	4- Ø14	42	30	3	8	24	F12	520
300	12	32	175	140	100	4	4- Ø18	48	40	3	10	27	F14	810
350	14	36	175	140	100	4	4- Ø18	54	50	3	10	31	F14	1360
400	16	40	210	165	130	5	4- Ø22	60	50	3	12	35	F16	2050
450	18	44	300	254	200	5	8- Ø18	66	50	3	12	39	F25	2710
500	20	50	300	254	200	5	8- Ø18	70	60	5	14	44.5	F25	3580
600	24	60	300	254	200	5	8- Ø18	80	70	5	18	53	F25	5780
700	28	70	350	298	230	5	8- Ø22	80	70	5	20	62.5	F30	8120
800	32	80	350	298	230	5	8- Ø22	110	100	5	22	71	F30	12100
900	36	90	350	298	230	5	8- Ø22	110	100	5	25	81	F30	14900
1000	40	100	350	298	230	5	8- Ø22	130	120	10	28	90	F30	22300
1200	48	120	475	406	300	8	8- Ø39	180	160	5	32	109	F40	37100
1400	56	140	475	406	300	8	8- Ø39	190	180	10	36	128	F40	55900
1600	64	160	560	483	370	8	12- Ø39	200	180	10	40	147	F48	81400

Flange type valve: PN16

DN	NPS	d	D	D1	D2	f	N-Ø	H	h	f1	B	K	ISO	Torque (N.m)
80	3	22	125	102	70	3	4- Ø12	33	30	3	6	18.5	F10	60
100	4	22	125	102	70	3	4- Ø12	33	30	3	6	18.5	F10	100
125	5	22	125	102	70	3	4- Ø12	33	30	3	6	18.5	F10	151
150	6	24	150	125	85	3	4- Ø14	36	30	3	8	20	F12	230
200	8	32	150	125	85	3	4- Ø14	48	40	3	10	27	F12	460
250	10	36	175	140	100	4	4- Ø18	55	50	3	10	31	F14	840
300	12	40	210	165	130	5	4- Ø22	60	50	3	12	35	F16	1300
350	14	44	210	165	130	5	4- Ø22	66	50	3	12	39	F16	2180
400	16	55	300	254	200	5	8- Ø18	70	60	3	16	49	F25	3270
450	18	60	300	254	200	5	8- Ø18	80	70	3	18	53	F25	4330
500	20	70	300	254	200	5	8- Ø18	80	70	3	20	62.5	F25	5730
600	24	80	350	298	230	5	8- Ø22	110	100	5	22	71	F30	9250
700	28	90	350	298	230	5	8- Ø22	110	100	5	25	81	F30	13100
800	32	100	350	298	230	5	8- Ø22	130	100	5	28	90	F30	19200
900	36	120	475	406	300	8	8- Ø39	170	160	5	32	109	F40	26500
1000	40	120	475	406	300	8	8- Ø39	180	160	5	32	109	F40	37900
1200	48	140	475	406	300	8	8- Ø39	190	180	5	36	128	F40	62400



CHINA GATE GENERAL TRADING

تشاينا غيت للتجارة العامة

ALL TYPES OF PIPES, FITTINGS, & VALVES

Flange type valve: PN25

DN	NPS	d	D	D1	D2	f	N-Ø	H	h	f1	B	K	ISO	Torque (N.m)
80	3	22	125	102	70	3	4- Ø12	33	30	3	6	18.5	F10	96
100	4	22	125	102	70	3	4- Ø12	33	30	3	6	18.5	F10	158
125	5	22	125	102	70	3	4- Ø12	33	30	3	6	18.5	F10	240
150	6	24	150	125	85	3	4- Ø14	36	30	3	8	20	F12	360
200	8	32	150	125	85	3	4- Ø14	48	40	3	10	27	F12	700
250	10	36	175	140	100	4	4- Ø18	55	50	3	10	31	F14	1300
300	12	40	210	165	130	5	4- Ø22	60	50	3	12	35	F16	2020
350	14	44	210	165	130	5	4- Ø22	66	50	3	12	39	F16	3400
400	16	55	300	254	200	5	8- Ø18	70	60	3	16	49	F25	5110
450	18	60	300	254	200	5	8- Ø18	80	70	3	18	53	F25	6760
500	20	70	300	254	200	5	8- Ø18	80	70	3	20	62.5	F25	8950
600	24	80	350	298	230	5	8- Ø22	110	100	5	22	71	F30	14500
700	28	90	350	298	230	5	8- Ø22	110	100	5	25	81	F30	20300
800	32	100	350	298	230	5	8- Ø22	130	100	5	28	90	F30	29900
900	36	120	475	406	300	8	8- Ø39	170	160	5	32	109	F40	41300
1000	40	120	475	406	300	8	8- Ø39	180	160	5	32	109	F40	67600
1200	48	140	475	406	300	8	8- Ø39	190	180	5	36	128	F40	103000

Flange type valve: PN40

DN	NPS	d	D	D1	D2	f	N-Ø	H	h	f1	B	K	ISO	Torque (N.m)
80	3	22	125	102	70	3	4- Ø12	33	30	3	6	18.5	F10	153
100	4	22	125	102	70	3	4- Ø12	33	30	3	6	18.5	F10	253
125	5	28	150	125	85	3	4- Ø14	46	30	3	8	24	F12	405
150	6	32	150	125	85	3	4- Ø14	48	40	3	10	27	F12	610
200	8	36	175	140	100	4	4- Ø18	55	50	3	10	31	F14	1160
250	10	40	210	165	130	5	4- Ø22	60	50	3	12	35	F16	2150
300	12	44	210	165	130	5	4- Ø22	66	50	3	12	39	F16	3320
350	14	55	300	254	200	5	8- Ø18	70	60	3	16	49	F25	5580
400	16	60	300	254	200	5	8- Ø18	80	70	3	18	53	F25	8090
450	18	70	350	298	230	5	8- Ø22	135	70	3	20	62.5	F30	11100
500	20	80	350	298	230	5	8- Ø22	110	100	5	22	71	F30	14400
600	24	90	350	298	230	5	8- Ø22	110	100	5	25	81	F30	24200
700	28	100	475	406	300	8	8- Ø39	130	100	5	28	90	F40	35200
800	32	120	475	406	300	8	8- Ø39	180	160	5	32	109	F40	53100
900	36	140	560	483	370	8	12- Ø39	200	180	5	36	128	F48	89925
1000	40	160	560	483	370	8	12- Ø39	200	180	10	40	147	F48	118778
1200	48	180	560	483	370	8	12- Ø39	240	220	10	45	165	F48	187809



CHINA GATE GENERAL TRADING

تشاينا غيت للتجارة العامة

ALL TYPES OF PIPES, FITTINGS, & VALVES

DTD Tri-eccentric Metal Seated Butterfly Valves

Flange type valve: PN63

DN	NPS	d	D	D1	D2	f	N-Ø	H	h	f1	B	K	ISO	Torque (N.m)
80	3	22	125	102	70	3	4- Ø12	33	30	3	6	18.5	F10	231
100	4	22	125	102	70	3	4- Ø12	33	30	3	6	18.5	F10	382
125	5	28	150	125	85	3	4- Ø14	46	30	3	8	24	F12	677
150	6	40	210	165	130	5	4- Ø22	60	50	3	12	35	F16	1280
200	8	44	210	165	130	5	4- Ø22	66	50	3	12	39	F16	2285
250	10	50	300	254	200	5	8- Ø18	70	60	5	14	44.5	F25	4443
300	12	60	300	254	200	5	8- Ø18	80	70	3	18	53	F25	5679
350	14	70	300	254	200	5	8- Ø18	80	70	3	20	62.5	F25	12378
400	16	80	350	298	230	5	8- Ø22	110	100	5	22	71	F30	16406

Flange type valve: CI150

DN	NPS	d	D	D1	D2	f	N-Ø	H	h	f1	B	K	ISO	Torque (N.m)
80	3	22	125	102	70	3	4- Ø12	33	30	3	6	18.5	F10	75
100	4	22	125	102	70	3	4- Ø12	33	30	3	6	18.5	F10	126
125	5	22	125	102	70	3	4- Ø12	33	30	3	6	18.5	F10	190
150	6	24	150	125	85	3	4- Ø14	36	30	3	8	20	F12	290
200	8	32	150	125	85	3	4- Ø14	48	40	3	10	27	F12	560
250	10	36	175	140	100	4	4- Ø18	55	50	3	10	31	F14	1040
300	12	40	210	165	130	5	4- Ø22	60	50	3	12	35	F16	1620
350	14	44	210	165	130	5	4- Ø22	66	50	3	12	39	F16	2720
400	16	55	300	254	200	5	8- Ø18	70	60	3	16	49	F25	4090
450	18	60	300	254	200	5	8- Ø18	80	70	3	18	53	F25	5410
500	20	70	300	254	200	5	8- Ø18	80	70	3	20	62.5	F25	7160
600	24	80	350	298	230	5	8- Ø22	110	100	5	22	71	F30	11600
700	28	90	350	298	230	5	8- Ø22	110	100	5	25	81	F30	16300
800	32	100	350	298	230	5	8- Ø22	130	100	5	28	90	F30	24100
900	36	120	475	406	300	8	8- Ø39	170	160	5	32	109	F40	33100
1000	40	120	475	406	300	8	8- Ø39	180	160	5	32	109	F40	47300
1200	48	140	475	406	300	8	8- Ø39	190	180	5	36	128	F40	78100

Flange type valve: CI300

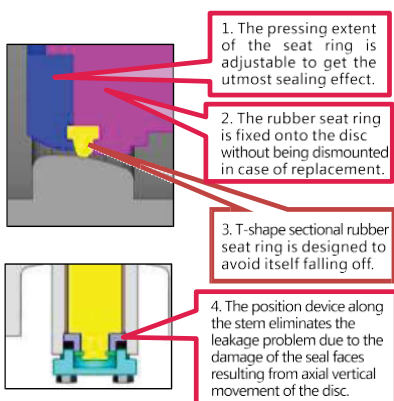
DN	NPS	d	D	D1	D2	f	N-Ø	H	h	f1	B	K	ISO	Torque (N.m)
80	3	22	125	102	70	3	4- Ø12	33	30	3	6	18.5	F10	192
100	4	22	125	102	70	3	4- Ø12	33	30	3	6	18.5	F10	316
125	5	28	150	125	85	3	4- Ø14	46	30	3	8	24	F12	505
150	6	32	150	125	85	3	4- Ø14	48	40	3	10	27	F12	760
200	8	36	175	140	100	4	4- Ø18	55	50	3	10	31	F14	1450
250	10	40	210	165	130	5	4- Ø22	60	50	3	12	35	F16	2690
300	12	44	210	165	130	5	4- Ø22	66	50	3	12	39	F16	4150
350	14	55	300	254	200	5	8- Ø18	70	60	3	16	49	F25	6970
400	16	60	300	254	200	5	8- Ø18	80	70	3	18	53	F25	10200
450	18	70	350	298	230	5	8- Ø22	135	70	3	20	62.5	F30	13800
500	20	80	350	298	230	5	8- Ø22	110	100	5	22	71	F30	17900
600	24	90	350	298	230	5	8- Ø22	110	100	5	25	81	F30	30200
700	28	100	475	406	300	8	8- Ø39	130	100	5	28	90	F40	43900
800	32	120	475	406	300	8	8- Ø39	180	160	5	32	109	F40	66300
900	36	140	560	483	370	8	12- Ø39	200	180	5	36	128	F48	119495
1000	40	160	560	483	370	8	12- Ø39	200	180	10	40	147	F48	170000
1200	48	180	560	483	370	8	12- Ø39	240	220	10	45	165	F48	234761



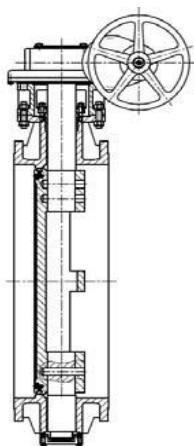
DTD Rubber Seated Double Eccentric Butterfly Valve

I. Structure & Features

DTD rubber seated butterfly valves are widely utilized in fields of petroleum, chemical, metallurgy, electric power, municipal construction, etc., for the purpose of shut-off and adjustment. Double eccentric structure is adopted for the valve, creating the prominent strengths of long service life, small size, light weight, easy maintenance, etc.



II. Specification



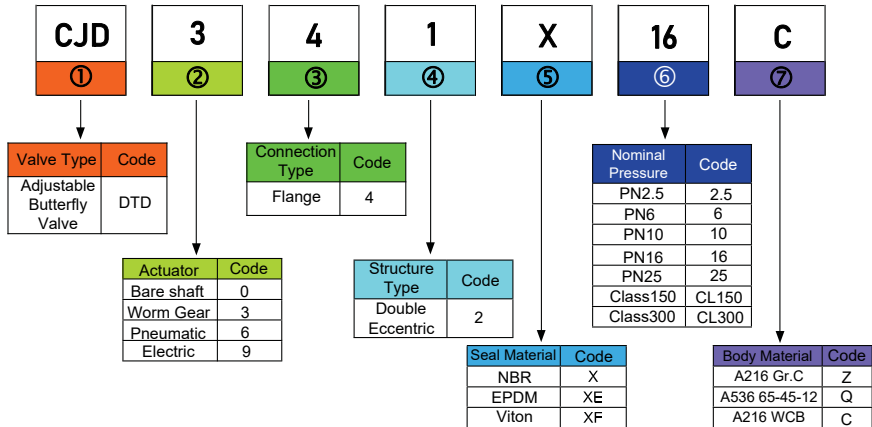
	European System PN	American System Class
Nominal Diameter	DN200 ~ DN3000	NPS8 ~ NPS60
Nominal Pressure	PN6 ~ PN25	CL150
Designing standard	EN593	ASME B16.34
Flange standard	EN1092-1	ASME B16.5 ASME B16.47
Face to Face dimension	EN558.1	API 609
Pressure test	EN12266-1	API 598
Shell test	1.5×CWP	
Seal test (water)	1.1×CWP	
Seal test (air)	0.6MPa	
Body material	Cast iron, Carbon steel, Stainless steel	
Rubber seal	NBR	EPDM FPM
Working temp.°C	-29~120	-29~150 -29~180
Working Medium	Water, Sea water, Gas etc.	

CWP : Cold Working Pressure



DTD Rubber Seated Double Eccentric Butterfly Valve

III. Coding System

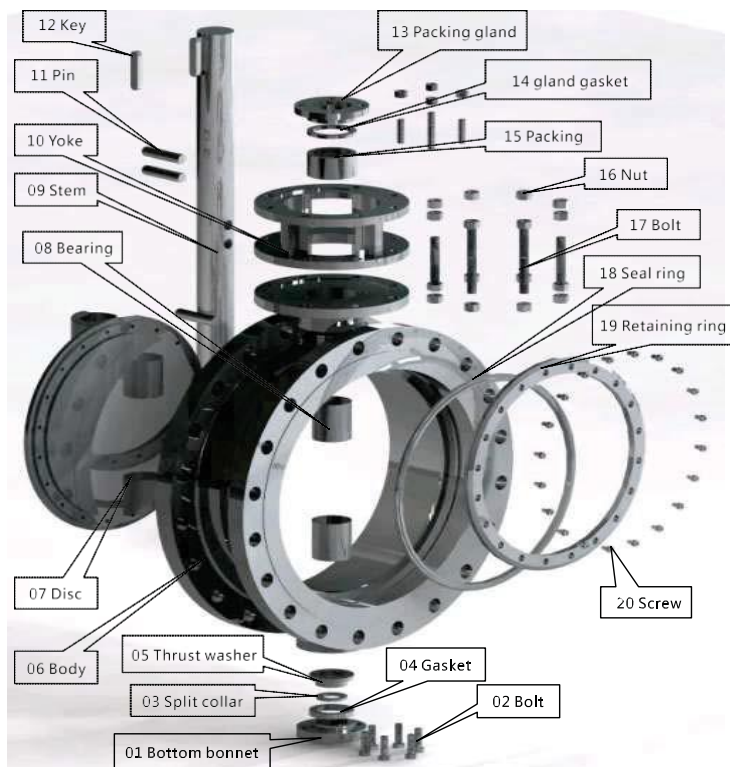


IV. Material Selection

Valve Material		Gray cast iron Z	Ductile cast iron Q	Carbon steel C
Spare parts	01 Bottom bonnet	A570 Gr. A	A570 Gr. A	A570 Gr. A
	02 Bolt	A193 B7	A193 B7	A193 B7
	03 Slit Collar	A276 420	A276 420	A276 420
	04 Gasket	Graphite Packing	Graphite Packing	Graphite Packing
	05 Thrust washer	A276 420	A276 420	A276 420
	06 Body	A126 Gr.C	A536 65-45-12	WCB/ A570 Gr. A
	07 Disc	A126 Gr.C	A536 65-45-12	WCB/A105
	08 Bearing	JF800	JF800	JF800
	09 Stem	A276 420	A276 420	A276 420
	10 Yoke	A216 WCB	A216 WCB	A216 WCB
	11 Pin	A108 Gr.1045	A108 Gr.1045	A108 Gr.1045
	12 Key	A108 Gr.1045	A108 Gr.1045	A108 Gr.1045
	13 Packing gland	A216 WCB/ A570 Gr. A	A216 WCB/ A570 Gr. A	A216 WCB/ A570 Gr. A
	14 Gland gasket	A276 420	A276 420	A276 420
	15 Packing	Graphite Packing	Graphite Packing	Graphite Packing
	16 Nut	A194 2H	A194 2H	A194 2H
	17 Bolt	A193 B7	A193 B7	A193 B7
	18 Seal ring	NBR, EPDM, FPM		
	19 Retaining ring	A126 Gr.C	A536 65-45-12	A570 Gr. A
	20 Screw	A193 B7	A193 B7	A193 B7

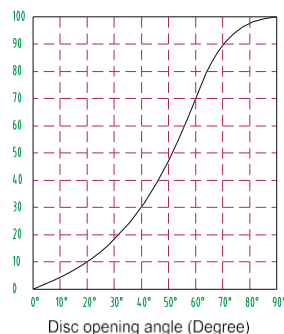


V. Disassembled View



VI. Discharge Parameter Diagram

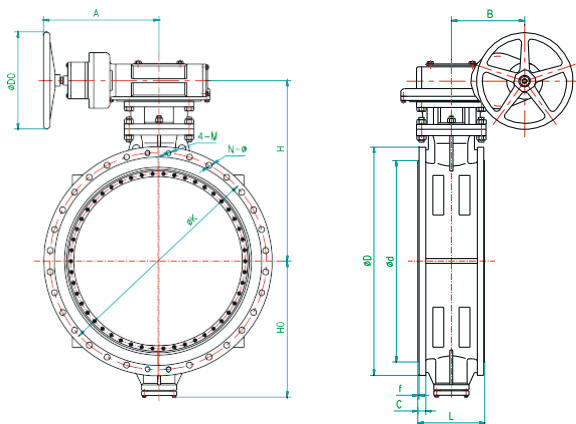
DN	80	100	125	150	200	250	300
NPS	3	4	5	6	8	10	12
Discharge parameter Cv	150	250	400	760	1360	2220	3600
DN	350	400	450	500	600	700	750
NPS	14	16	18	20	24	28	30
Discharge parameter Cv	5200	7200	9600	12550	18960	27000	31500
DN	800	900	1000	1100	1200	1400	1600
NPS	32	36	40	44	48	56	64
Discharge parameter Cv	36000	45000	57000	69000	82500	117000	176000
DN	1800	2000	2200	2400	2600	2800	3000
NPS	72	80	88	96	104	112	120
Discharge parameter Cv	250000	380000	460000	550000	640000	740000	850000





DTD Rubber Seated Double Eccentric Butterfly Valve

VII. Dimension Diagram



DTD342X-6

DN	L	D	K	N-Ø	4-M	d	C	f	H	Ho	A	B	Do	Weight (Kg)
200	152	320	280	4-Ø18	M16	258	22	3	351	200	325	66	305	63
250	165	375	335	8-Ø18	M16	312	22	3	384	231	315	78	305	83
300	178	440	395	8-Ø22	M20	365	22	4	415	261	281	120	406	125
350	190	490	445	8-Ø22	M20	415	22	4	470	298	281	120	406	148
400	216	540	495	12-Ø22	M20	465	22	4	531	331	365	146	400	242
450	222	595	550	12-Ø22	M20	520	22	4	564	369	365	146	400	279
500	229	645	600	16-Ø22	M20	570	24	4	596	404	365	146	400	334
600	267	755	705	16-Ø26	M24	670	30	5	676	473	525	305	400	527
700	292	860	810	20-Ø26	M24	775	30	5	749	538	525	305	400	652
800	318	975	920	20-Ø30	M27	880	30	5	829	615	525	305	400	744
900	330	1075	1020	20-Ø30	M27	980	34	5	852	628	525	305	400	900
1000	410	1175	1120	24-Ø30	M27	1080	38	5	991	705	590	413	400	1451
1200	470	1405	1340	28-Ø33	M30	1295	42	5	1112	830	590	413	400	1978
1400	530	1630	1560	32-Ø36	M33	1510	56	5	1223	985	590	413	400	2688
1600	600	1830	1760	36-Ø36	M33	1710	63	5	1442	1080	698	425	650	4405
1800	670	2045	1970	40-Ø39	M36	1920	69	5	1626	1253	698	425	650	5672
2000	760	2265	2180	44-Ø42	M39	2125	74	5	1723	1332	698	425	650	7257
2200	800	2475	2390	48-Ø42	M39	2335	81	5	1981	1541	698	425	650	8031
2400	850	2685	2600	52-Ø42	M39	2545	87	5	2060	1596	865	560	650	10046
2600	900	2905	2810	56-Ø48	M45	2750	91	5	2202	1755	865	560	650	11310
2800	950	3115	3020	60-Ø48	M45	2960	101	5	2345	1915	865	560	650	13500
3000	1000	3315	3220	64-Ø48	M45	3160	102	5	2478	1970	865	560	650	14500



CHINA GATE GENERAL TRADING

تشاينا غيت للتجارة العامة

ALL TYPES OF PIPES, FITTINGS, & VALVES

DTD342X-10

DN	L	D	K	N-Ø	4-M	d	C	f	H	Ho	A	B	Do	Weight (Kg)
200	152	340	295	4-Ø22	M20	268	24	3	351	200	325	66	305	69
250	165	395	350	8-Ø22	M20	320	26	3	384	231	315	78	305	90
300	178	445	400	8-Ø22	M20	370	26	4	415	261	281	120	406	129
350	190	505	460	12-Ø22	M20	430	26	4	470	298	281	120	406	156
400	216	565	515	12-Ø26	M24	482	26	4	531	331	365	146	400	256
450	222	615	565	16-Ø26	M24	532	28	4	564	369	365	146	400	296
500	229	670	620	16-Ø26	M24	585	28	4	596	404	365	146	400	351
600	267	780	725	16-Ø30	M27	685	30	5	676	473	525	305	400	565
700	292	895	840	20-Ø30	M27	800	35	5	749	538	525	305	400	704
800	318	1015	950	20-Ø33	M30	905	38	5	829	615	525	305	400	889
900	330	1115	1050	24-Ø33	M30	1005	38	5	852	628	525	305	400	1467
1000	410	1230	1160	24-Ø36	M33	1110	44	5	991	705	590	413	400	1601
1200	470	1455	1380	28-Ø39	M36	1330	55	5	1112	830	590	413	400	2207
1400	530	1675	1590	32-Ø42	M39	1535	65	5	1223	985	590	413	400	2969
1600	600	1915	1820	36-Ø48	M45	1760	75	5	1442	1080	698	425	650	4889
1800	670	2115	2020	40-Ø48	M45	1960	85	5	1626	1253	698	425	650	6854
2000	760	2325	2230	44-Ø48	M45	2170	90	5	1723	1332	698	425	650	8709
2200	800	2550	2440	48-Ø55	M52	2370	100	5	1981	1541	698	425	650	9637
2400	850	2760	2650	52-Ø55	M52	2570	110	5	2060	1596	865	560	650	12055
2600	900	2960	2850	56-Ø55	M52	2780	110	5	2202	1755	865	560	650	13572
2800	950	3180	3070	60-Ø55	M52	3000	124	5	2345	1915	865	560	650	16200
3000	1000	3405	3290	64-Ø60	M56	3210	132	5	2478	1970	865	560	650	17400

DTD342X-16

DN	L	D	K	N-Ø	4-M	d	C	f	H	Ho	A	B	Do	Weight (Kg)
200	152	340	295	8-Ø22	M20	268	24	3	351	200	325	66	305	69
250	165	405	355	8-Ø26	M24	320	26	3	384	231	315	78	305	93
300	178	460	410	8-Ø26	M24	378	28	4	415	261	281	120	406	137
350	190	520	470	12-Ø26	M24	438	30	4	470	298	281	120	406	170
400	216	580	525	12-Ø30	M27	490	32	4	531	331	365	146	400	275
450	222	640	585	16-Ø30	M27	550	34	4	564	369	365	146	400	324
500	229	715	650	16-Ø33	M30	610	36	4	596	404	365	146	400	403
600	267	840	770	16-Ø36	M33	725	40	5	676	473	525	305	400	631
700	292	910	840	20-Ø36	M33	795	40	5	749	538	525	305	400	742
800	318	1025	950	20-Ø39	M36	900	41	5	829	615	525	305	400	929
900	330	1125	1050	24-Ø39	M36	1000	48	5	925	700	590	413	400	1511
1000	410	1255	1170	24-Ø42	M39	1115	59	5	1013	730	590	413	400	2106
1200	470	1485	1390	28-Ø48	M45	1330	78	5	1137	850	590	413	400	2905
1400	530	1685	1590	32-Ø48	M45	1530	84	5	1348	980	698	425	650	3917
1600	600	1930	1820	36-Ø55	M52	1750	102	5	1517	1155	698	425	650	6106
1800	670	2130	2020	40-Ø55	M52	1950	110	5	1680	1310	698	425	650	8560
2000	760	2345	2230	44-Ø60	M56	2150	124	5	1776	1438	698	425	650	10886



CHINA GATE GENERAL TRADING

تشاينا غيت للتجارة العامة

ALL TYPES OF PIPES, FITTINGS, & VALVES

DTD342X-25

DN	L	D	K	N-Ø	4-M	d	C	f	H	Ho	A	B	Do	Weight (Kg)
200	152	360	310	8-Ø26	M24	278	30	3	351	200	325	66	305	81
250	165	425	370	8-Ø30	M27	335	32	3	384	231	315	78	305	109
300	178	485	430	12-Ø30	M27	395	34	4	415	261	281	120	406	158
350	190	555	490	12-Ø33	M30	450	38	4	470	298	281	120	406	205
400	216	620	550	12-Ø36	M33	505	40	4	531	331	365	146	400	321
450	222	670	600	16-Ø36	M33	555	46	4	564	369	365	146	400	382
500	229	730	660	16-Ø36	M33	615	48	4	596	404	365	146	400	457
600	267	845	770	16-Ø39	M36	720	48	5	676	473	525	305	400	680
700	292	960	875	20-Ø42	M39	820	50	5	749	538	525	305	400	851
800	318	1085	990	20-Ø48	M45	930	53	5	829	615	525	305	400	1088
900	330	1185	1090	24-Ø48	M45	1030	57	5	925	700	590	413	400	1703
1000	410	1320	1210	24-Ø55	M52	1140	63	5	1013	730	590	413	400	2665
1200	470	1530	1420	28-Ø55	M52	1350	70	5	1137	850	590	413	400	3722

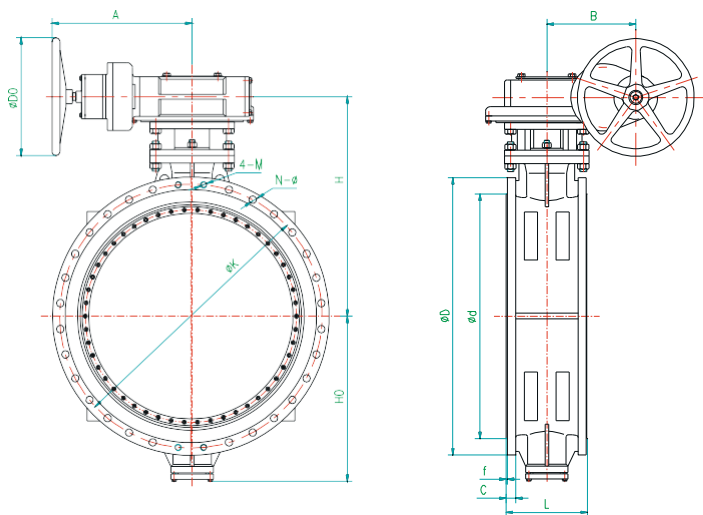
DTD Rubber Seated Double Eccentric Butterfly Valve



CHINA GATE GENERAL TRADING

تشاينا غيت للتجارة العامة

ALL TYPES OF PIPES, FITTINGS, & VALVES



DTD342X-CL150

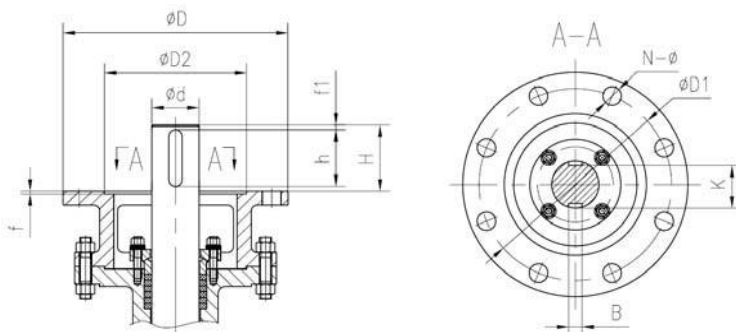
NPS	L	D	K	N-Ø	4-M	d	C	f	H	Ho	A	B	Do	Weight (Kg)
8	152	345	298.5	4-Ø22	M20	270	29	2	351	200	325	66	305	81
10	165	405	362	8-Ø26	M24	324	30.5	2	384	231	315	78	305	109
12	178	485	432	8-Ø26	M24	381	32	2	415	261	281	120	406	158
14	190	535	476	8-Ø29.5	M27	413	35	2	470	298	281	120	406	205
16	216	600	540	12-Ø29.5	M27	470	37	2	531	331	365	146	400	321
18	222	635	578	12-Ø32.5	M30	533.5	40	2	564	369	365	146	400	382
20	229	700	635	16-Ø32.5	M30	584.5	43	2	596	404	365	146	400	457
24	267	815	749.5	16-Ø35.5	M33	692.5	48	2	676	473	525	305	400	680
28	292	927	863.5	24-Ø36	M33	800	71	2	749	538	525	305	400	936
32	318	1060	978	24-Ø42	M39	914	82	2	829	615	525	305	400	1197
36	330	1168	1086	28-Ø42	M39	1022	90	2	925	700	590	413	400	1873
40	410	1289	1200	32-Ø42	M39	1124	90	2	1023	730	590	413	400	2931
48	470	1511	1422.5	40-Ø42	M39	1359	108	2	1137	850	590	413	400	3722
56	530	1746	1651	44-Ø48	M45	1575	124	2	1348	980	698	425	650	4308
60	600	1854	1759	48-Ø48	M45	1676	132	2	1467	1105	698	425	650	6710



DTD Rubber Seated Double Eccentric Butterfly Valve

Top Flange Connecting Size

Listed in the following charts, those data according to standard are only for your reference. Any charge or revision can be made without extra notice.



Applicable scope :
Flange type valve : PN6

DN	NPS	d	D	D1	D2	f	N-Ø	H	h	f1	B	K	ISO	Torque
N.m	8	24	150	125	85	3	4- Ø14	36	30	3	8	20	F12	190
250	10	28	150	125	85	3	4- Ø14	42	30	3	8	24	F12	320
300	12	32	175	140	100	4	4- Ø18	48	40	3	10	27	F14	520
350	14	36	210	165	130	5	4- Ø22	54	50	3	10	31	F16	870
400	16	40	210	165	130	5	4- Ø22	60	50	3	12	35	F16	1230
450	18	44	210	165	130	5	4- Ø22	66	50	3	12	39	F16	1630
500	20	50	300	254	200	5	8- Ø18	70	60	5	14	44.5	F25	2140
600	24	60	300	254	200	5	8- Ø18	80	70	5	18	53	F25	3600
700	28	70	300	254	200	5	8- Ø18	80	70	5	20	62.5	F25	4480
800	32	80	350	298	230	5	8- Ø22	110	100	5	22	71	F30	6640
900	36	90	350	298	230	5	8- Ø22	110	100	5	25	81	F30	8900
1000	40	90	350	298	230	5	8- Ø22	110	100	5	25	81	F30	13400
1200	48	100	350	298	230	5	8- Ø22	130	120	10	28	90	F30	22200
1400	56	120	475	406	300	8	8- Ø39	180	160	10	32	109	F40	33600
1600	64	140	475	406	300	8	8- Ø39	190	180	10	36	128	F40	48900
1800	72	160	560	483	370	8	12- Ø39	200	180	10	40	147	F48	67100
2000	80	180	560	483	370	8	12- Ø39	240	220	10	45	165	F48	94900
2200	88	200	560	483	370	8	12- Ø39	240	220	10	45	175	F48	125000
2400	96	220	560	483	370	8	12- Ø39	260	240	10	50	203	F48	162000
2600	104	240	686	603	470	8	20- Ø39	320	310	10	56	220	F60	203000
2800	112	260	686	603	470	8	20- Ø39	380	310	10	56	240	F60	251000
3000	120	280	686	603	470	8	20- Ø39	380	360	10	63	260	F60	307000



CHINA GATE GENERAL TRADING

تشاينا غيت للتجارة العامة

ALL TYPES OF PIPES, FITTINGS, & VALVES

Flange type valve: PN10

DN	NPS	d	D	D1	D2	f	N-Ø	H	h	f1	B	K	ISO	Torque
N.m	8	24	150	125	85	3	4-Ø14	36	30	3	8	20	F12	280
250	10	28	150	125	85	3	4-Ø14	42	30	3	8	24	F12	520
300	12	32	175	140	100	4	4-Ø18	48	40	3	10	27	F14	810
350	14	36	210	165	130	5	4-Ø22	54	50	3	10	31	F16	1360
400	16	40	210	165	130	5	4-Ø22	60	50	3	12	35	F16	2050
450	18	44	210	165	130	5	4-Ø22	66	50	3	12	39	F16	2710
500	20	50	300	254	200	5	8-Ø18	70	60	5	14	44.5	F25	3580
600	24	60	300	254	200	5	8-Ø18	80	70	5	18	53	F25	5780
700	28	70	300	254	200	5	8-Ø18	80	70	5	20	62.5	F25	8120
800	32	80	350	298	230	5	8-Ø22	110	100	5	22	71	F30	12100
900	36	90	350	298	230	5	8-Ø22	110	100	5	25	81	F30	14900
1000	40	100	475	406	300	8	8-Ø39	130	120	10	28	90	F40	22300
1200	48	120	475	406	300	8	8-Ø39	180	160	10	32	109	F40	37100
1400	56	140	475	406	300	8	8-Ø39	190	180	10	36	128	F40	55900
1600	64	160	560	483	370	8	12-Ø39	200	180	10	40	147	F48	81400
1800	72	180	560	483	370	8	12-Ø39	240	220	10	45	165	F48	117000
2000	80	200	560	483	370	8	12-Ø39	240	220	10	45	175	F48	165000
2200	88	220	560	483	370	8	12-Ø39	260	240	10	50	203	F48	207000
2400	96	240	686	603	470	8	20-Ø39	320	310	10	56	220	F60	277000
2600	104	260	686	603	470	8	20-Ø39	380	310	10	56	240	F60	348000
2800	112	280	686	603	470	8	20-Ø39	380	360	10	63	260	F60	429000

Flange type valve: PN16

DN	NPS	d	D	D1	D2	f	N-Ø	H	h	f1	B	K	ISO	Torque
200	8	32	150	125	85	3	4-Ø14	48	40	3	10	27	F12	460
250	10	36	175	140	100	4	4-Ø18	54	50	3	10	31	F14	840
300	12	40	210	165	130	5	4-Ø22	60	50	3	12	35	F16	1300
350	14	44	210	165	130	5	4-Ø22	66	50	3	12	39	F16	2180
400	16	50	300	254	200	5	8-Ø18	70	60	5	14	44.5	F25	3270
450	18	60	300	254	200	5	8-Ø18	80	70	5	18	53	F25	4330
500	20	70	300	254	200	5	8-Ø18	80	70	5	20	62.5	F25	5730
600	24	80	350	298	230	5	8-Ø22	110	100	5	22	71	F30	9250
700	28	90	350	298	230	5	8-Ø22	110	100	5	25	81	F30	13100
800	32	100	350	298	230	5	8-Ø22	130	120	10	28	90	F30	19200
900	36	120	475	406	300	8	8-Ø39	180	160	10	32	109	F40	26500
1000	40	120	475	406	300	8	8-Ø39	180	160	10	32	109	F40	37900
1200	48	140	475	406	300	8	8-Ø39	190	180	10	36	128	F40	62400
1400	56	160	560	483	370	8	12-Ø39	200	180	10	40	147	F48	93900
1600	64	180	560	483	370	8	12-Ø39	240	220	10	45	165	F48	152000



CHINA GATE GENERAL TRADING

تشاينا غيت للتجارة العامة

ALL TYPES OF PIPES, FITTINGS, & VALVES

DTD Rubber Seated Double Eccentric Butterfly Valve

Flange type valve : PN25

DN	NPS	d	D	D1	D2	f	N-Ø	H	h	f1	B	K	ISO	Torque
200	8	32	150	125	85	3	4- Ø14	48	40	3	10	27	F12	700
250	10	36	175	140	100	4	4- Ø18	54	50	3	10	31	F14	1300
300	12	40	210	165	130	5	4- Ø22	60	50	3	12	35	F16	2020
350	14	44	210	165	130	5	4- Ø22	66	50	3	12	39	F16	3400
400	16	50	300	254	200	5	8- Ø18	70	60	5	14	44.5	F25	5110
450	18	60	300	254	200	5	8- Ø18	80	70	5	18	53	F25	6760
500	20	70	300	254	200	5	8- Ø18	80	70	5	20	62.5	F25	8950
600	24	80	350	298	230	5	8- Ø22	110	100	5	22	71	F30	14500
700	28	90	350	298	230	5	8- Ø22	110	100	5	25	81	F30	20300
800	32	100	350	298	230	5	8- Ø22	130	120	10	28	90	F30	29900
900	36	120	475	406	300	8	8- Ø39	180	160	10	32	109	F40	41300
1000	40	120	475	406	300	8	8- Ø39	180	160	10	32	109	F40	67600
1200	48	140	475	406	300	8	8- Ø39	190	180	10	36	128	F40	103000
1400	56	160	560	483	370	8	12- Ø39	200	180	10	40	147	F48	152838
1600	64	180	560	483	370	8	12- Ø39	240	220	10	45	165	F48	251400

Flange type valve : CL150

DN	NPS	d	D	D1	D2	f	N-Ø	H	h	f1	B	K	ISO	Torque
200	8	32	150	125	85	3	4- Ø14	48	40	3	10	27	F12	560
250	10	36	175	140	100	4	4- Ø18	54	50	3	10	31	F14	1040
300	12	40	210	165	130	5	4- Ø22	60	50	3	12	35	F16	1620
350	14	44	210	165	130	5	4- Ø22	66	50	3	12	39	F16	2720
400	16	50	300	254	200	5	8- Ø18	70	60	5	14	44.5	F25	4090
450	18	60	300	254	200	5	8- Ø18	80	70	5	18	53	F25	5410
500	20	70	300	254	200	5	8- Ø18	80	70	5	20	62.5	F25	7160
600	24	80	350	298	230	5	8- Ø22	110	100	5	22	71	F30	11600
700	28	90	350	298	230	5	8- Ø22	110	100	5	25	81	F30	16300
800	32	100	350	298	230	5	8- Ø22	130	120	10	28	90	F30	24100
900	36	120	475	406	300	8	8- Ø39	180	160	10	32	109	F40	33100
1000	40	120	475	406	300	8	8- Ø39	180	160	10	32	109	F40	47300
1200	48	140	475	406	300	8	8- Ø39	190	180	10	36	128	F40	78100
1400	56	160	560	483	370	8	12- Ø39	200	180	10	40	147	F48	128000
1600	64	180	560	483	370	8	12- Ø39	240	220	10	45	165	F48	185736



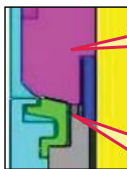
GSD Bi-directional PTFE Seated Butterfly Valve

I. Structure & Features

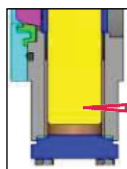
GSD Bi-directional PTFE Seated Butterfly Valve are widely utilized in fields of petroleum, chemical, metallurgy, electric power, municipal construction, etc., for the purpose of shut-off and adjustment. Double eccentric structure is adopted for the valve, creating the prominent strengths of long service life, small size, light weight, easy maintenance, etc.

GSD PTFE seated butterfly valves (fire-safe type) have served in the petroleum and chemical industry desirably.

With double sealing structure, the valve can prevent the leakage of fluids in case of fire disaster to ensure higher reliability and provide complete compliance with API 609.



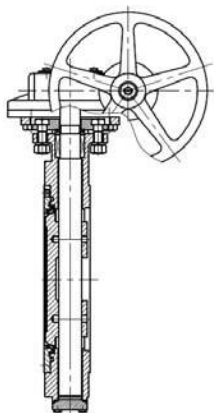
1. The eccentric structure greatly reduces the friction of seal faces and torque force.



2. With the elastic seat and fixed spherical surface seal structure, the media pressure can achieve the zero leakage and tightness on both directions.

3. The shaft with maintenance-free bearing can ensure a good stability.

II. Specification



	European System PN	American System Class
Nominal Diameter	DN50 ~ DN1000	NPS2 ~ NPS40
Nominal Pressure	PN10 ~ PN40	CL150 ~ CL300
Designing standard	EN593	API 609 ASME B16.34
Flange standard	EN1092-1	ASME B16.5 ASME B16.47
Welding standard	EN12627	ASME B16.25
Face to Face standard	EN558	API 609
Pressure test	EN12266-1	API 598
Shell test	1.5×CWP	
Seal test(water)	1.1×CWP	
Seal test(air)	0.6MPa	
Body material	Carbon steel	Stainless steel
Working temp.°C	-29~180	-29~180
Working Medium	Water, gas, oil etc.	Corrosion

CWP : Cold Working Pressure



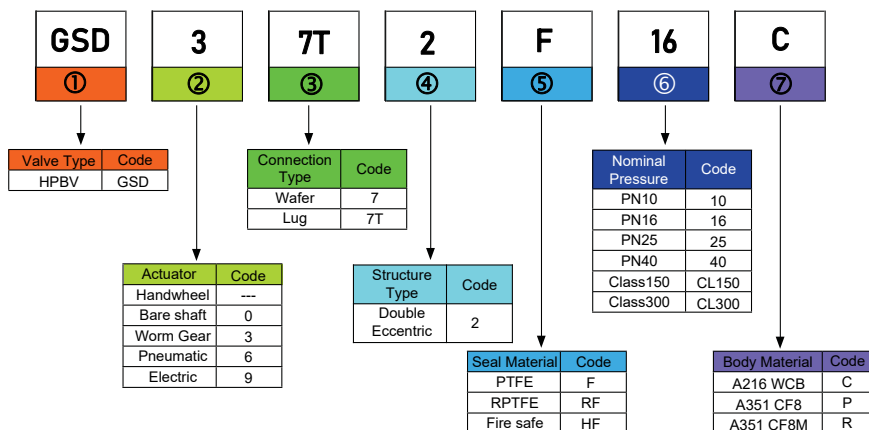
CHINA GATE GENERAL TRADING

تشاينا غيت للتجارة العامة

ALL TYPES OF PIPES, FITTINGS, & VALVES

GSD Bi-directional PTFE Seated Butterfly Valve

III. Coding System

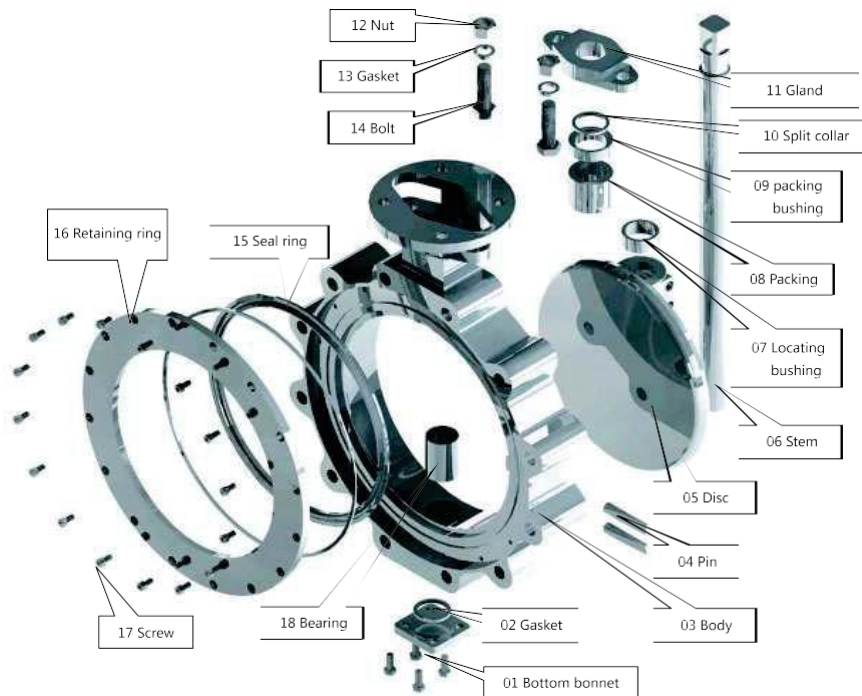


IV. Material Selection

Valve Material	Gray cast iron Z	Ductile cast iron Q	Carbon steel C
01 Bottom bonnet	A570 Gr. A	A182 F304	A182 F316
02 Gasket	PTFE	PTFE	PTFE
03 Body	A216 WCB	A351 CF8	A351 CF8M
04 Pin	A276 420	A276 431	A705 630
05 Disc	A216 WCB	A351 CF8	A351 CF8M
06 Stem	A276 420	A276 431	A705 630
07 Locating bushing	A276 420	A276 304	A276 316
08 Packing	PTFE	PTFE	PTFE
09 packing bushing	A276 420	A276 30..	A276 316
10 Split collar	A276 420	A276 30..	A276 316
11 Gland	A216 WCB	A351 CF8	A351 CF8M
12 Nut	A194 2H	A194 8	A194 8M
13 Gasket	A194 2H	A194 8	A194 8M
14 Bolt	A193 B7	A193 B8	A193 B8M
15 Seal ring	PTFE	PTFE	PTFE
16 Retaining ring	A105	A182 F304	A182 F316
17 Screw	A193 B7	A193 B8	A193 B8M
18 bearing	SF-1S	SF-1SS	SF-1SS



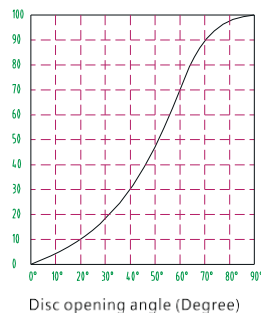
V. Disassembled View



VI. Discharge Parameter Diagram

DN	100	125	150	200	250	300
NPS	4	5	6	8	10	12
Discharge parameter Cv	410	655	1060	2230	3330	5120
DN	350	400	450	500	600	
NPS	14	16	18	20	24	
Discharge parameter Cv	5840	8080	10540	14060	21680	

Cv is recorded when both sides of pressure are according to 1 PSI standard.





Pressure Seal, Bi-direction, Zero Leakage

Comparison between new and old structures

Butterfly valve is an ideal blockage device used in conduits and is the main stream in the industry. Butterfly valves can operate quickly to its working positions with a rotation of only 90 degree. It is simple in structure, light and economical in material, easy to handle and easy to realize remote control. However, the traditional butterfly valves are limited in their applications because they can only work at a normal temperature and a pressure below PN 1.0M Pa due to their non-optimal structure and seal material. The traditional butterfly valves achieve the sealing by excessively pressing the disc edge onto the internal elastic rubber or PTFE seat ring, but their frictional torque force is large and seal faces can easily get fatigue, wear or crack resulting a sooner leakage, shorter life and narrower application range (See Figure 1 for Details). Our new valve can work well under a pressure of PN1.0~4.0 MPa and at a temperature of -29~150°C. The more the pressure on the disc, the better the sealing (same as that in a check valve). The seal material of the seat ring is PTFE or TFE, which has a small frictional coefficient (only 0.07) with the metal disc's convex face and has eliminated the problems regarding temperature, corrosion and aging, bringing an increased working pressure, a longer service life and a broader application range (See Figure 1 for details).

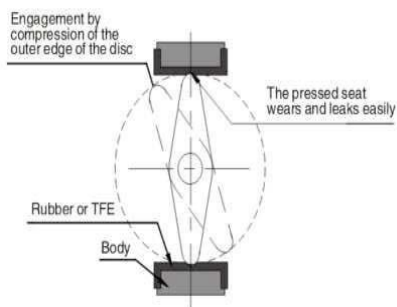
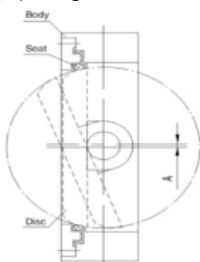


Illustration of the old structure (Figure 1)

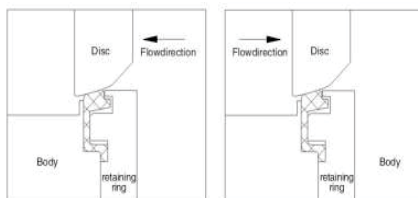


Easy Operation by Eccentric Structure

The double eccentric structure is made up of valve body, stem and disc. By shifting from a rotation to a translation motion when closing, the seat of the disc brought to a full contact with the seal, achieving a perfect sealing. The disc convex face moves away from the seat face quickly and completely when opening, significantly reducing the friction of the seal faces and the torque force (See Figure 2 for details).

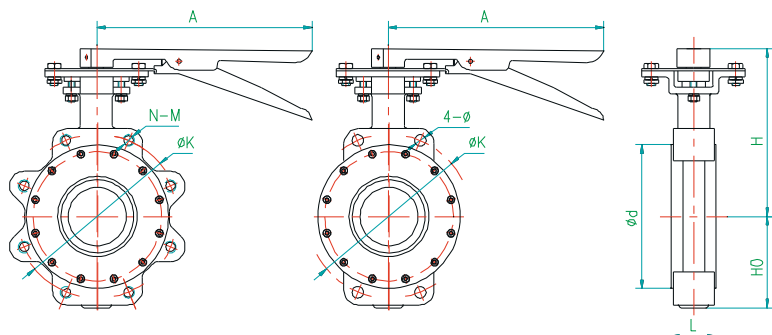
Bi-directional zero leakage

The valve with elastic seat and fixed spherical surface seal structure, thus form a better tightness for the seal part by the medium pressure and the valve can achieve the bi-directional tightness with zero leakage (See Figure 3).





VII. Dimension Drawing



GSD72F-10, GSD7T2F-10

DN mm	L	K	N-M	4-Ø	d	H	Ho	A	Weight(Kg)	
									Wafer	Lug
50	46	125	4-M16	Ø18	99	140	80	260	6	7
65	48	145	4-M16	Ø18	118	165	80	260	7	8
80	48	160	8-M16	Ø18	132	175	95	260	7.5	9
100	54	180	8-M16	Ø18	156	200	115	260	12	13
125	57	210	8-M16	Ø18	184	225	130	350	18	20
150	57	240	8-M20	Ø20	211	245	145	400	20	22
200	64	295	8-M20	Ø20	266	275	190	650	31	34

GSD72F-16, GSD7T2F-16

DN mm	L	K	N-M	4-Ø	d	H	Ho	A	Weight(Kg)	
									Wafer	Lug
50	46	125	4-M16	Ø18	99	140	80	260	6	7
65	48	145	4-M16	Ø18	118	165	80	260	7	8
80	48	160	8-M16	Ø18	132	175	95	260	7.5	9
100	54	180	8-M16	Ø18	156	200	115	260	12	13
125	57	210	8-M16	Ø18	184	225	130	350	18	20
150	57	240	8-M20	Ø20	211	245	145	400	20	22
200	64	295	8-M20	Ø20	266	275	190	650	31	34

GSD72F-25, GSD7T2F-25

DN mm	L	K	N-M	4-Ø	d	H	Ho	A	Weight(Kg)	
									Wafer	Lug
50	46	125	4-M16	Ø18	99	140	80	260	6	7
65	48	145	8-M16	Ø18	118	165	80	260	7	8
80	48	160	8-M16	Ø18	132	175	95	260	7.5	9
100	54	190	8-M20	Ø22	156	200	115	260	12	13
125	57	220	8-M24	Ø26	184	225	130	350	18	20
150	57	250	8-M24	Ø26	211	245	145	400	20	22
200	64	310	8-M24	Ø26	274	275	190	650	31	34



CHINA GATE GENERAL TRADING

تشاينا غيت للتجارة العامة

ALL TYPES OF PIPES, FITTINGS, & VALVES

GSD Bi-directional PTFE Seated Butterfly Valve

GSD72F-40, GSD7T2F-40

DN mm	L	K	N-M	4-Ø	d	H	Ho	A	Weight(Kg)	
									Wafer	Lug
50	46	125	4-M16	Ø18	99	140	80	260	6	7
65	48	145	8-M16	Ø18	118	165	80	260	7	8
80	48	160	8-M16	Ø18	132	175	95	260	7.5	9
100	54	190	8-M20	Ø22	156	200	115	260	12	13
125	57	220	8-M24	Ø26	184	225	130	350	18	20
150	57	250	8-M24	Ø26	211	245	145	400	20	22

GSD72F-CL150, GSD7T2F-CL150

NPS	L	K	N-M	4-Ø	d	H	Ho	A	Weight(Kg)	
									Wafer	Lug
2	46	120.5	4-M16	Ø18	92	140	80	260	6	7
2.5	48	139.5	4-M16	Ø18	105	165	80	260	7	8
3	48	152.5	4-M16	Ø18	127	175	95	260	7.5	9
4	54	190.5	8-M16	Ø18	157.5	200	115	260	12	13
5	57	216	8-M20	Ø22	186	225	130	350	18	20
6	57	241.5	8-M20	Ø22	216	245	145	400	20	22
8	64	298.5	8-M20	Ø22	270	275	190	650	31	34

GSD72F-CL300, GSD7T2F-CL300

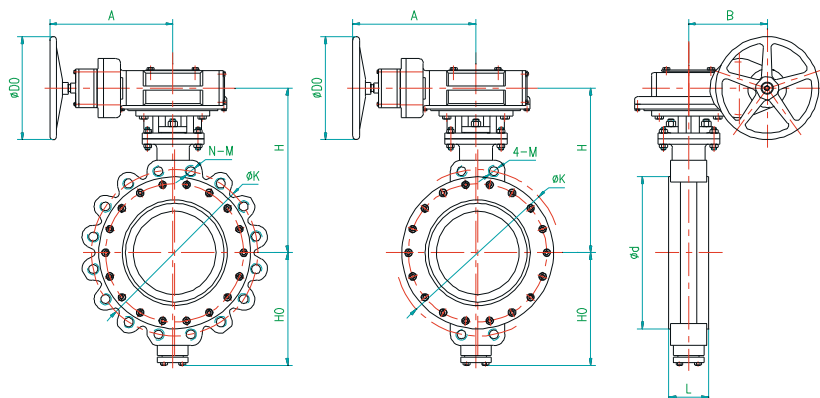
NPS	L	K	N-M	4-Ø	d	H	Ho	A	Weight(Kg)	
									Wafer	Lug
2	46	127	8-M16	Ø18	92	140	80	260	6	7
2.5	48	149	8-M20	Ø22	105	165	80	260	7	8
3	48	168.5	8-M20	Ø22	127	175	95	260	7.5	9
4	54	200	8-M20	Ø22	157.5	200	115	260	12	13
5	57	235	8-M20	Ø22	186	225	130	350	18	20
6	59	270	12-M20	Ø22	216	245	145	400	20	22



CHINA GATE GENERAL TRADING

تشاينا غيت للتجارة العامة

ALL TYPES OF PIPES, FITTINGS, & VALVES



GSD372F-10, GSD37T2F-10

DN mm	L	K	N-M	4-M	d	H	Ho	A	B	D0	Weight(Kg)	
											Wafer	Lug
250	76	350	12-M20	M20	319	410	230	315	78	305	45	50
300	83	400	12-M20	M20	370	450	260	281	120	406	76	84
350	92	460	16-M20	M20	429	520	286	281	120	406	95	105
400	102	515	16-M24	M24	480	581	330	365	146	400	166	185
450	114	565	20-M24	M24	530	591	360	365	146	400	203	225
500	127	620	20-M24	M24	582	631	400	365	146	400	243	270
600	154	725	20-M27	M27	682	736	460	525	305	400	405	450
700	165	840	24-M27	M27	794	741	485	525	305	400	495	550
800	190	950	24-M30	M30	901	829	540	525	305	400	630	700
900	203	1050	28-M30	M30	1001	871	600	525	305	400	1107	1230
1000	216	1160	28-M33	M33	1112	976	700	525	305	400	1193	1325

GSD372F-16, GSD37T2F-16

DN mm	L	K	N-M	4-M	d	H	Ho	A	B	D0	Weight(Kg)	
											Wafer	Lug
250	76	355	12-M24	M24	319	410	230	315	78	305	47	52
300	83	410	12-M24	M24	370	450	260	281	120	406	77	85
350	92	470	16-M24	M24	429	520	286	281	120	406	97	107
400	102	525	16-M27	M27	480	581	330	365	146	400	169	188
450	114	585	20-M27	M27	548	591	360	365	146	400	206	228
500	127	650	20-M30	M30	609	631	400	365	146	400	246	275
600	154	770	20-M33	M33	720	736	460	525	305	400	408	455
700	165	840	24-M33	M33	794	741	485	525	305	400	498	555
800	190	950	24-M36	M36	901	829	540	525	305	400	633	708
900	203	1050	28-M36	M36	1001	871	600	525	305	400	1110	1238
1000	216	1170	28-M39	M39	1112	976	700	525	305	400	1196	1330



CHINA GATE GENERAL TRADING

تشاينا غيت للتجارة العامة

ALL TYPES OF PIPES, FITTINGS, & VALVES

GSD Bi-directional PTFE Seated Butterfly Valve

GSD372F-25, GSD37T2F-25

DN mm	L	K	N-M	4-M	d	H	Ho	A	B	D0	Weight(Kg)	
											Wafer	Lug
250	76	370	12-M27	M27	330	410	230	315	78	305	50	55
300	83	430	12-M27	M27	389	450	260	281	120	406	80	88
350	92	490	16-M30	M30	448	520	286	281	120	406	97	108
400	102	550	16-M33	M33	503	581	330	365	146	400	206	228
450	114	600	20-M33	M33	548	591	360	365	146	400	248	275
500	127	660	20-M33	M33	609	631	400	365	146	400	410	455
600	154	770	20-M36	M36	720	736	460	525	305	400	500	555

GSD372F-40, GSD37T2F-40

DN mm	L	K	N-M	4-M	d	H	Ho	A	B	D0	Weight(Kg)	
											Wafer	Lug
200	73	320	12-M27	M27	284	295	220	315	78	305	45	50
250	83	385	12-M30	M30	345	350	240	315	78	305	52	58
300	92	450	16-M30	M30	409	410	275	281	120	406	90	100
350	117	510	16-M33	M33	465	460	330	281	120	406	99	110
400	133	585	16-M36	M36	535	596	360	365	146	400	207	230
450	149	610	20-M36	M36	560	616	400	365	146	400	252	280
500	159	670	20-M39	M39	615	670	431	525	305	400	414	460
600	181	795	20-M45	M45	735	737	492	525	305	400	504	560

GSD372F-CL150, GSD37T2F-CL150

DN mm	L	K	N-M	4-M	d	H	Ho	A	B	D0	Weight(Kg)	
											Wafer	Lug
10	71	362	12-M24	M24	324	410	230	315	78	305	47	52
12	81	432	12-M24	M24	381	450	260	281	120	406	77	85
14	92	476	12-M27	M27	413	520	286	281	120	406	97	107
16	102	540	16-M27	M27	470	581	330	365	146	400	169	188
18	114	578	16-M30	M30	533.5	591	360	365	146	400	206	228
20	127	635	20-M30	M30	584.5	631	400	365	146	400	246	275
24	154	749.5	20-M33	M33	692.5	736	460	525	305	400	408	455
28	165	863.5	28-M33	M33	800	741	485	525	305	400	498	555
32	190	978	28-M39	M39	914	829	540	525	305	400	633	708
36	203	1086	32-M39	M39	1022	871	600	525	305	400	1110	1238
40	216	1200	36-M39	M39	1124	976	700	525	305	400	1196	1330

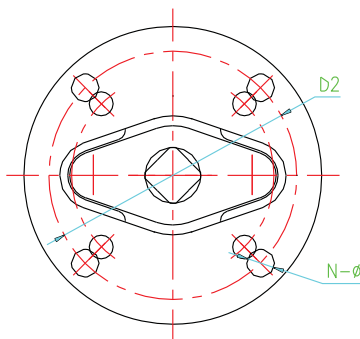
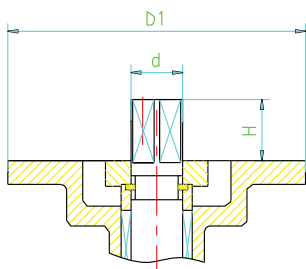
GSD372F-CL300lb, GSD37T2F-CL300

DN mm	L	K	N-M	4-M	d	H	Ho	A	B	D0	Weight(Kg)	
											Wafer	Lug
8	73	330	12-M24	M24	270	295	220	315	78	305	50	55
10	83	387.5	16-M27	M27	324	350	240	315	78	305	59	65
12	92	451	16-M30	M30	381	410	275	281	120	406	95	105
14	117	514.5	20-M30	M30	413	460	330	281	120	406	108	120
16	133	571.5	20-M33	M33	470	596	360	365	146	400	225	250
18	149	628.5	24-M33	M33	533.5	616	400	365	146	400	270	300
20	159	686	24-M33	M33	584.5	670	431	525	305	400	450	500
24	181	813	24-M39	M39	692.5	737	492	525	305	400	540	600



Top Flange Connecting Size

List in the following charts, those data according to standard are only for your reference. Any charge or revision can be made without extra notice.



Applicable scope : PN10

DN	NPS	d	H	D1	D2	N-Φ	ISO	Torque N.m
50	2	11×11	24	90	70	4-Φ9	F07	20
65	2 1/2	11×11	24	90	70	4-Φ9	F07	27
80	3	14×14	24	90	70	4-Φ9	F07	29
100	4	14×14	24	125	102	4-Φ12	F10	42
125	5	17×17	27	125	102	4-Φ12	F10	90
150	6	17×17	30	125	102	4-Φ12	F10	108

Applicable scope : PN16

DN	NPS	d	H	D1	D2	N-Φ	ISO	Torque N.m
50	2	11×11	24	90	70	4-Φ9	F07	20
65	2 1/2	11×11	24	90	70	4-Φ9	F07	32
80	3	14×14	24	90	70	4-Φ9	F07	34
100	4	14×14	24	125	102	4-Φ12	F10	47
125	5	17×17	27	125	102	4-Φ12	F10	106
150	6	17×17	30	125	102	4-Φ12	F10	220



GSD Bi-directional PTFE Seated Butterfly Valve

Applicable scope : PN25

DN	NPS	d	H	D1	D2	N-Φ	ISO	Torque N.m
50	2	11×11	24	90	70	4-Φ9	F07	20
65	2 1/2	11×11	24	90	70	4-Φ9	F07	43
80	3	14×14	24	90	70	4-Φ9	F07	45
100	4	14×14	24	125	102	4-Φ12	F10	82
125	5	17×17	27	125	102	4-Φ12	F10	157
150	6	17×17	30	125	102	4-Φ12	F10	365

Applicable scope : PN40

DN	NPS	d	H	D1	D2	N-Φ	ISO	Torque N.m
50	2	11×11	24	90	70	4-Φ9	F07	20
65	2 1/2	11×11	24	90	70	4-Φ9	F07	58
80	3	14×14	24	90	70	4-Φ9	F07	60
100	4	14×14	24	125	102	4-Φ12	F10	120
125	5	17×17	27	125	102	4-Φ12	F10	209
150	6	17×17	30	125	102	4-Φ12	F10	360

Applicable scope : CL150

DN	NPS	d	H	D1	D2	N-Φ	ISO	Torque N.m
50	2	11×11	24	90	70	4-Φ9	F07	20
65	2 1/2	11×11	24	90	70	4-Φ9	F07	50
80	3	14×14	24	90	70	4-Φ9	F07	67.5
100	4	14×14	24	125	102	4-Φ12	F10	118
125	5	17×17	27	125	102	4-Φ12	F10	185
150	6	17×17	30	125	102	4-Φ12	F10	265

Applicable scope : CL300

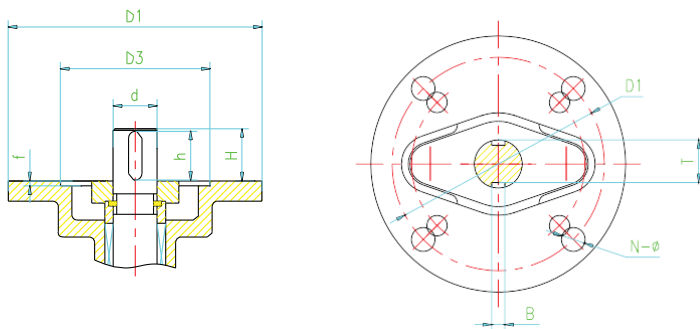
DN	NPS	d	H	D1	D2	N-Φ	ISO	Torque N.m
50	2	11×11	24	90	70	4-Φ9	F07	20
65	2 1/2	11×11	24	90	70	4-Φ9	F07	75
80	3	14×14	24	90	70	4-Φ9	F07	90
100	4	14×14	24	125	102	4-Φ12	F10	175
125	5	17×17	27	125	102	4-Φ12	F10	260
150	6	17×17	30	125	102	4-Φ12	F10	410



CHINA GATE GENERAL TRADING

تشاينا غيت للتجارة العامة

ALL TYPES OF PIPES, FITTINGS, & VALVES



Applicable scope: PN10

DN	NPS	d	H	D1	D2	N-Φ	D3	f	B	T	h	ISO	Torque N.m
200	8	24	36	150	125	4-Φ14	—	—	8	20	30	F12	192
250	10	36	54	175	140	4-Φ18	—	—	10	31	40	F14	373
300	12	44	66	210	165	4-Φ22	—	—	12	39	50	F16	565
350	14	60	80	300	254	8-Φ18	200	5	18	53	70	F25	836
400	16	70	80	300	254	8-Φ18	200	5	20	62	70	F25	1277
450	18	80	110	350	298	8-Φ22	230	5	22	71	100	F30	1921
500	20	80	110	350	298	8-Φ22	230	5	22	71	100	F30	2407
600	24	80	110	350	298	8-Φ22	230	5	22	71	100	F30	3909
700	28	90	130	350	298	8-Φ22	230	5	25	81	100	F30	5310
800	32	100	140	350	298	8-Φ22	230	5	28	90	120	F30	6890
900	36	110	140	350	298	8-Φ22	230	5	28	90	120	F30	9152
1000	40	110	140	350	298	8-Φ22	230	5	28	100	120	F30	10395

Applicable scope: PN16

DN	NPS	d	H	D1	D2	N-Φ	D3	f	B	T	h	ISO	Torque N.m
200	8	24	36	150	125	4-Φ14	—	—	8	20	30	F12	320
250	10	36	54	175	140	4-Φ18	—	—	10	31	40	F14	425
300	12	44	66	210	165	4-Φ22	—	—	12	39	50	F16	667
350	14	60	80	300	254	8-Φ18	200	5	18	53	70	F25	960
400	16	70	80	300	254	8-Φ18	200	5	20	62	70	F25	1525
450	18	80	110	350	298	8-Φ22	230	5	22	71	100	F30	2260
500	20	80	110	350	298	8-Φ22	230	5	22	71	100	F30	2791
600	24	80	110	350	298	8-Φ22	230	5	22	71	100	F30	4531
700	28	90	130	350	298	8-Φ22	230	5	25	81	100	F30	6689
800	32	100	140	350	298	8-Φ22	230	5	28	90	120	F30	8677
900	36	110	140	350	298	8-Φ22	230	5	28	90	120	F30	11073
1000	40	110	140	350	298	8-Φ22	230	5	28	100	120	F30	12428



CHINA GATE GENERAL TRADING

تشاينا غيت للتجارة العامة

ALL TYPES OF PIPES, FITTINGS, & VALVES

GSD Bi-directional PTFE Seated Butterfly Valve

Applicable scope: PN25

DN	NPS	d	H	D1	D2	N-Φ	D3	f	B	T	h	ISO	Torque N.m
200	8	24	36	150	125	4-Φ14	—	—	8	20	30	F12	365
250	10												644
300	12	36	54	175	140	4-Φ18	—	—	10	31	40	F14	975
350	14												1479
400	16	44	66	210	165	4-Φ22	—	—	12	39	50	F16	2656
450	18	60	80	300	254	8-Φ18	200	5	18	53	70	F25	3062
500	20	70	80	300	254	8-Φ18	200	5	20	62	70	F25	4180
600	24	80	110	350	298	8-Φ22	230	5	22	71	100	F30	6497

Applicable scope: PN40

DN	NPS	d	H	D1	D2	N-Φ	D3	f	B	T	h	ISO	Torque N.m
200	8	32	48	150	125	4-Φ14	—	—	10	27	40	F12	486
250	10	36	54	175	140	4-Φ18	—	—	10	31	40	F14	859
300	12	44	66	210	165	4-Φ22	—	—	12	39	50	F16	1299
350	14	50	70	210	165	4-Φ22	—	—	12	44	60	F16	2068
400	16	60	80	300	254	8-Φ18	200	5	18	53	70	F25	3500
450	18	70	80	300	254	8-Φ18	200	5	20	62	70	F25	4250
500	20	80	110	350	298	8-Φ22	230	5	22	71	100	F30	5570
600	24	90	110	350	298	8-Φ22	230	5	25	81	100	F30	8666

Applicable scope: CL150

DN	NPS	d	H	D1	D2	N-Φ	D3	f	B	T	h	ISO	Torque N.m
200	8												345
250	10	24	36	150	125	4-Φ14	—	—	8	20	30	F12	525
300	12	36	54	175	140	4-Φ18	—	—	10	31	40	F14	620
350	14												1180
400	16	44	66	210	165	4-Φ22	—	—	12	39	50	F16	1520
450	18	60	80	300	254	8-Φ18	200	5	18	53	70	F25	2000
500	20	70	80	300	254	8-Φ18	200	5	20	62	70	F25	2700
600	24	80	110	350	298	8-Φ22	230	5	22	71	100	F30	4200
700	28	80	110	350	298	8-Φ22	230	5	22	71	100	F30	6135
800	32	90	110	350	298	8-Φ22	230	5	25	81	100	F30	8800
900	36	100	130	350	298	8-Φ22	230	5	28	90	120	F30	12200
1000	40	110	140	350	298	8-Φ22	230	5	28	100	120	F30	17670



CHINA GATE GENERAL TRADING

تشاينا غيت للتجارة العامة

ALL TYPES OF PIPES, FITTINGS, & VALVES

Applicable scope : CI300

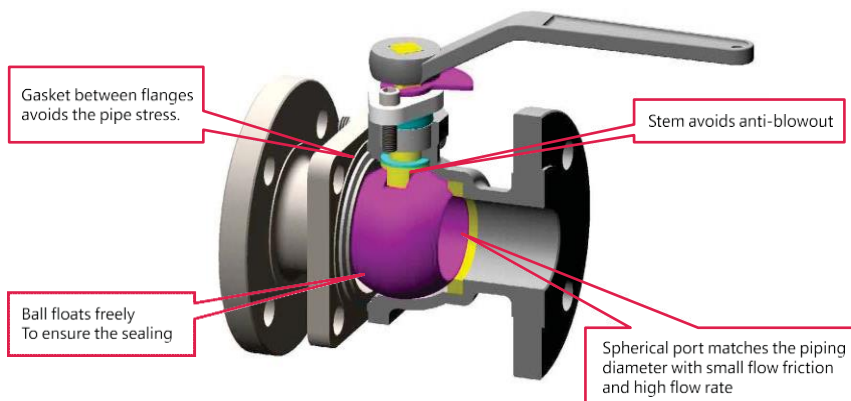
DN	NPS	d	H	D1	D2	N-Φ	D3	f	B	T	h	ISO	Torque N.m
200	8	32	48	150	125	4-Φ14	—	—	10	27	40	F12	1100
250	10	36	54	175	140	4-Φ18	—	—	10	31	40	F14	1800
300	12	44	66	210	165	4-Φ22	—	—	12	39	50	F16	2400
350	14	50	70	210	165	4-Φ22	—	—	12	44	60	F16	4400
400	16	60	80	300	254	8-Φ18	200	5	18	53	70	F25	5300
450	18	70	80	300	254	8-Φ18	200	5	20	62	70	F25	6700
500	20	80	110	350	298	8-Φ22	230	5	22	71	100	F30	6950
600	24	90	110	350	298	8-Φ22	230	5	25	81	100	F30	9380



Floating Ball Valve

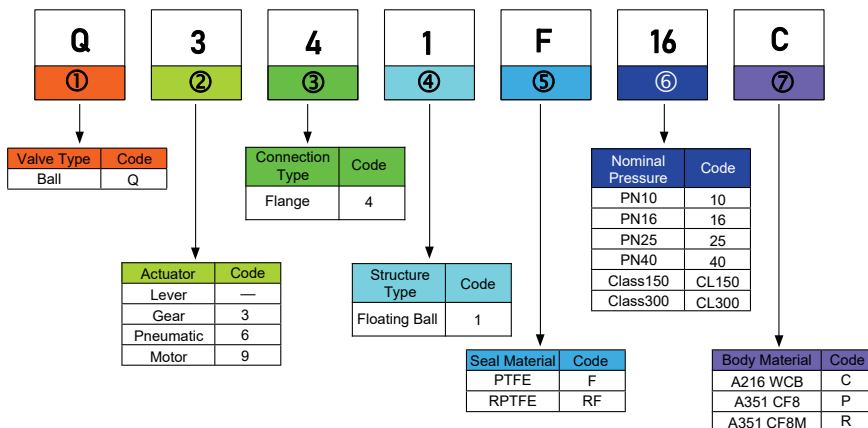
I. Structure & Features

Ball valve relies on ball with spherical port as closure member while the ball rotates round stem center by the force of stem in quarter turn. It serves the purpose of cutting off the media with the advantage of light weight, small size, simple structure, compact design and swift closing.



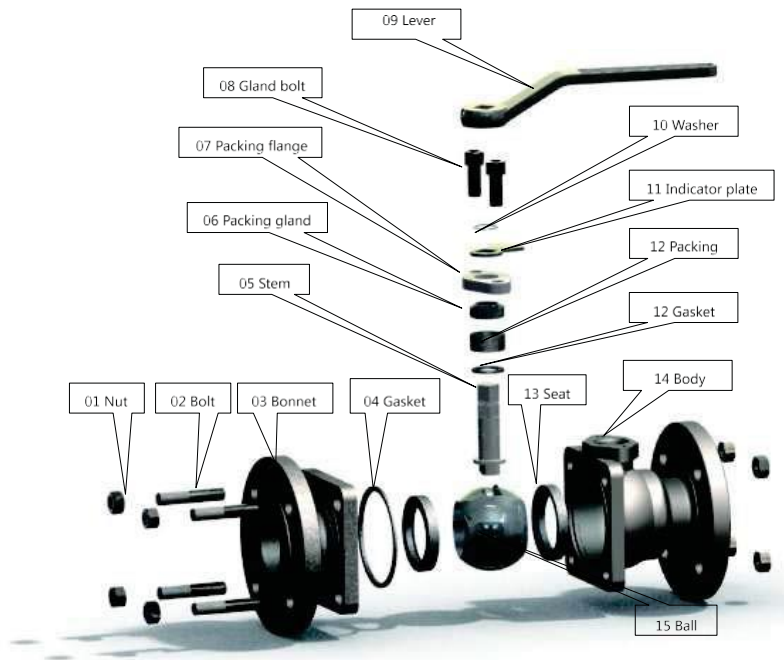
50

II. Coding System





III. Disassembled View



IV. Material Selection

Spare parts	Material	Carbon Steel C	CrNi S.S. P	CrNiMo S.S. R
	01 Nut	A194 2H	A194 8	A194 8M
	02 Bolt	A193 B7	A193 B8	A193 B8M
	03 Bonnet	A216 WCB	A351 CF8	A351 CF8M
	04 Gasket	PTFE	PTFE	PTFE
	05 Stem	A276 420	A705 630	A705 630
	06 Packing gland	A182 F6a	A182 F304	A182 F304
	07 Packing flange	A216 WCB	A351 CF8	A351 CF8
	08 Gland bolt	A193 B7	A193 B8	A193 B8
	09 Lever	A536 60-40-18	A536 60-40-18	A536 60-40-18
	10 Washer	Spring steel	Spring steel	Spring steel
	11 Indicator plate	A570 Gr. A	A570 Gr. A	A570 Gr. A
	12 Packing	PTFE	PTFE	PTFE
	13 Seat	PTFE	PTFE	PTFE
	14 Body	A216 WCB	A351 CF8	A351 CF8M
	15 Ball	A182 F6a	A182 F304	A182 F316



CHINA GATE GENERAL TRADING

تشاينا غيت للتجارة العامة

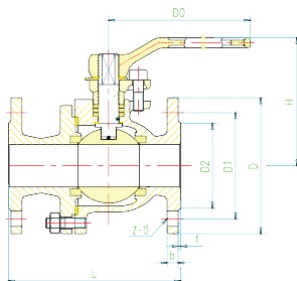
ALL TYPES OF PIPES, FITTINGS, & VALVES

V. Standard



	European Standard PN				American Standard Class	
Nominal Diameter	DN15	DN200			NPS1/2	NPS8
Nominal Pressure	PN10	PN16	PN25	PN40	CL150	CL300
Design standard	ISO17292				API 608	ASME B16.34
Flange standard	EN1092-1				ASME B16.5	
Flange type	RF FM				RF	R
F to F dimension	EN558				ASME B16.10	
Pressure test	EN12266-1				API 598	
Shell test				1.5×CWP		
Seal test(water)				1.1×CWP		
Seal test(air)				0.6Mpa		
Body material	A216 WCB		A351 CF8	A351 CF8M		
Ball material	A182 F6a		A182 F304	A182 F316		
Metal seat material	A182 F6a		A182 F304	A182 F316		
Soft seat material				PTFE,RPTFE		
Stem material				A276 420	A705 630	
Operation				Lever, Gear, Pneumatic, Motor		

VI. Configuration Size



DN	L	D	D1	D2	b	f	z-d	D0	H	Weight (KG)
15	108	95	65	45	16	2	4- 14	140	62	3.6
20	117	105	75	58	18	2	4- 14	160	68	4.6
25	127	115	85	68	18	2	4- 14	180	75	7.4
32	140	140	100	78	18	2	4- 18	250	85	9.5
40	165	150	110	88	18	3	4- 18	300	95	11.5
50	178	165	125	102	18	3	4- 18	350	110	16.1
65	190	185	145	122	18	3	8- 18	350	130	28
80	203	200	160	138	20	3	8- 18	400	155	37
100	229	220	180	158	20	3	8- 18	500	180	55
125	356	250	210	188	22	3	8- 18	600	250	98
150	394	285	240	212	22	3	8- 22	800	275	124
200	457	340	295	268	24	3	8- 22	800	345	229



CHINA GATE GENERAL TRADING

تشاينا غيت للتجارة العامة

ALL TYPES OF PIPES, FITTINGS, & VALVES

Concentric Rubber Seated Butterfly Valve

Q41F-16

DN	L	D	D1	D2	b	f	z-d	D0	H	Weight (KG)
15	108	95	65	45	16	2	4- 14	140	78	3.6
20	117	105	75	58	18	2	4- 14	160	8-	4.6
25	127	115	85	68	18	2	4- 14	180	95	7.4
32	140	140	100	78	18	2	4- 18	250	115	9.5
40	165	150	110	88	18	3	4- 18	300	150	11.5
50	178	165	125	102	18	3	4- 18	350	150	16.1
65	190	185	145	122	18	3	8- 18	350	205	28
80	203	200	160	138	20	3	8- 18	400	215	37
100	229	220	180	158	20	3	8- 18	500	250	55
125	356	250	210	188	22	3	8- 18	600	285	98
150	39-	285	240	212	22	3	8- 22	800	300	124
200	457	340	295	268	2-	3	12- 22	800	325	229

Q41F-25

DN	L	D	D1	D2	b	f	z-d	D0	H	Weight (KG)
15	140	95	65	45	16	2	4- 14	140	103	3.6
20	152	105	75	58	18	2	4- 14	160	112	4.6
25	165	115	85	68	18	2	4- 14	180	123	7.4
32	178	140	100	78	18	2	4- 18	250	150	9.5
40	190	150	110	88	18	3	4- 18	300	156	11.5
50	216	165	125	102	20	3	4- 18	350	196	16.1
65	241	185	145	122	22	3	8- 18	350	215	28
80	283	200	160	138	2-	3	8- 18	400	222	37
100	305	235	190	162	2-	3	8- 22	500	253	55
125	381	270	220	188	26	3	8- 26	600	295	98
150	-03	300	250	218	28	3	8- 26	800	305	124
200	502	360	310	278	30	3	12- 26	800	345	229

Q41F-40

DN	L	D	D1	D2	b	f	z-d	D0	H	Weight (KG)
15	140	95	65	45	16	2	4- 14	140	78	4.4
20	152	105	75	58	18	2	4- 14	160	8-	5.6
25	165	115	85	68	18	2	4- 14	180	95	9.3
32	178	140	100	78	18	2	4- 18	250	150	14.2
40	190	150	110	88	18	3	4- 18	300	150	17.0
50	216	165	125	102	20	3	4- 18	350	190	21.3
65	241	185	145	122	22	3	8- 18	350	195	35
80	283	200	160	138	2-	3	8- 18	400	215	46
100	305	235	190	162	2-	3	8- 22	500	250	80
125	381	270	220	188	26	3	8- 26	600	285	135
150	-03	300	250	218	28	3	8- 26	800	370	170



CHINA GATE GENERAL TRADING

تشاينا غيت للتجارة العامة

ALL TYPES OF PIPES, FITTINGS, & VALVES

Q41F-CL150

NPS	L	D	D1	D2	b	f	z-d	D0	H	Weight (KG)
1/2	108	90	60.3	34.9	10.0	2	4- 16	140	62	3.6
3/4	117	100	69.9	42.9	10.9	2	4- 16	160	68	4.6
1	127	110	79.4	50.8	11.6	2	4- 16	180	75	7.4
1 1/4	140	115	88.9	63.5	13.2	2	4- 16	250	85	9.5
1 1/2	165	125	98.4	73.0	14.7	2	4- 16	300	95	11.5
2	178	150	120.7	92.1	16.3	2	4- 19	350	110	16.1
2 1/2	191	180	139.7	104.8	17.9	2	4- 19	350	130	28
3	203	190	152.4	127.0	19.5	2	4- 19	400	155	37
4	229	230	190.5	157.2	24.3	2	8- 19	500	180	55
6	394	280	241.3	215.9	25.9	2	8- 22	800	275	124
8	457	345	298.5	269.9	29.0	2	8- 22	800	345	229

Q41F-CL300

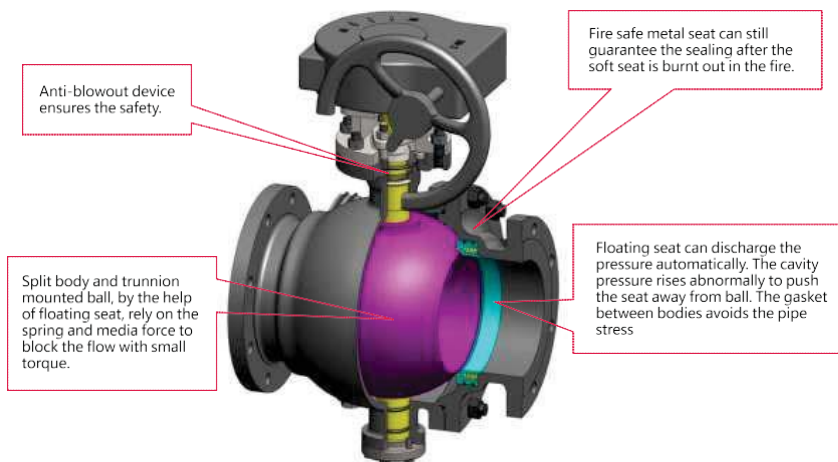
NPS	L	D	D1	D2	b	f	z-d	D0	H	Weight (KG)
1/2	140	95	66.7	34.9	14.7	2	4- 16	140	78	4.4
3/4	152	115	82.6	42.9	16.3	2	4- 19	160	84	5.6
1	165	125	88.9	50.8	17.9	2	4- 19	180	95	9.3
1 1/4	178	135	98.4	63.5	19.5	2	4- 19	250	115	14.2
1 1/2	191	155	11~.3	73.0	21.1	2	4- 22	300	150	17.0
2	216	165	127.0	92.1	22.7	2	8- 19	350	150	21.3
2 1/2	241	190	149.2	104.8	25.9	2	8- 22	350	205	35
3	282	210	168.3	127.0	29.6	2	8- 22	400	215	46
4	305	255	200.0	157.2	32.2	2	8- 22	500	250	80
6	-03	320	269.9	215.9	37.0	2	12- 22	800	350	170
8	502	380	330.2	269.9	-1.7	2	12- 26	800	425	280



Trunnion Mounted Ball Valve

I. Structure & Features

The ball is trunnion mounted type. Seat can float to ensure the inlet sealing performance under media pressure. It serves the purpose of cutting off the media with the advantage of light weight, small size, simple structure, compact design and swift closing.

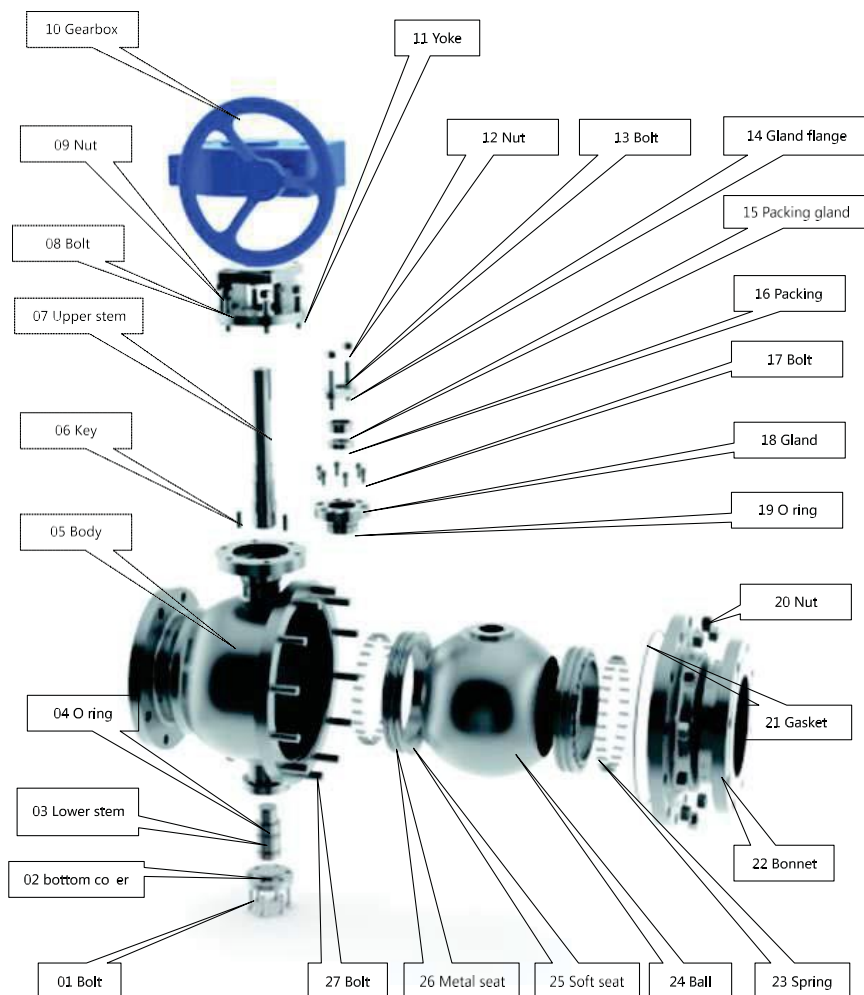


II. Coding System

Q ①	3 ②	4 ③	7 ④	F ⑤	16 ⑥	C ⑦																																																		
<table><tr><th>Valve Type</th><th>Code</th></tr><tr><td>Ball</td><td>Q</td></tr></table>	Valve Type	Code	Ball	Q	<table><tr><th>Actuator</th><th>Code</th></tr><tr><td>Lever</td><td>—</td></tr><tr><td>Gear</td><td>3</td></tr><tr><td>Pneumatic</td><td>6</td></tr><tr><td>Motor</td><td>9</td></tr></table>	Actuator	Code	Lever	—	Gear	3	Pneumatic	6	Motor	9	<table><tr><th>Connection Type</th><th>Code</th></tr><tr><td>Flange</td><td>4</td></tr></table>	Connection Type	Code	Flange	4	<table><tr><th>Structure Type</th><th>Code</th></tr><tr><td>Trunion Mounted</td><td>7</td></tr></table>	Structure Type	Code	Trunion Mounted	7	<table><tr><th>Seal Material</th><th>Code</th></tr><tr><td>PTFE</td><td>F</td></tr><tr><td>RPTFE</td><td>RF</td></tr></table>	Seal Material	Code	PTFE	F	RPTFE	RF	<table><tr><th>Nominal Pressure</th><th>Code</th></tr><tr><td>PN10</td><td>10</td></tr><tr><td>PN16</td><td>16</td></tr><tr><td>PN25</td><td>25</td></tr><tr><td>PN40</td><td>40</td></tr><tr><td>Class150</td><td>CL150</td></tr><tr><td>Class300</td><td>CL300</td></tr></table>	Nominal Pressure	Code	PN10	10	PN16	16	PN25	25	PN40	40	Class150	CL150	Class300	CL300	<table><tr><th>Body Material</th><th>Code</th></tr><tr><td>A216 WCB</td><td>C</td></tr><tr><td>A351 CF8</td><td>P</td></tr><tr><td>A351 CF8M</td><td>R</td></tr></table>	Body Material	Code	A216 WCB	C	A351 CF8	P	A351 CF8M	R
Valve Type	Code																																																							
Ball	Q																																																							
Actuator	Code																																																							
Lever	—																																																							
Gear	3																																																							
Pneumatic	6																																																							
Motor	9																																																							
Connection Type	Code																																																							
Flange	4																																																							
Structure Type	Code																																																							
Trunion Mounted	7																																																							
Seal Material	Code																																																							
PTFE	F																																																							
RPTFE	RF																																																							
Nominal Pressure	Code																																																							
PN10	10																																																							
PN16	16																																																							
PN25	25																																																							
PN40	40																																																							
Class150	CL150																																																							
Class300	CL300																																																							
Body Material	Code																																																							
A216 WCB	C																																																							
A351 CF8	P																																																							
A351 CF8M	R																																																							



III. Disassembled View





IV. Material Selection

Spare part	Material	Carbon steel C	CrNi S.S P	CrMoNi S.S. R
	01 Bolt	A193 B7	A193 B8	A193 B8
	02 Bottom cover	A570 Gr. A	A182 F304	A182 F316
	03 Lower stem	A276 420	A705 630	A705 630
	04 O ring	NBR	NBR	NBR
	05 Body	A216 WCB	A351 CF8	A351 CF8M
	06 Key	A182 F6a	A182 F304	A182 F316
	07 Upper stem	A276 420	A705 630	A705 630
	08 Bolt	A193 B7	A193 B8	A193 B8
	09 Nut	A194 2H	A194 8	A194 8M
	10 Gearbox	Assembly set	Assembly set	Assembly set
	11 Yoke	A216 WCB	A351 CF8	A351 CF8M
	12 Nut	A194 2H	A194 8	A194 8M
	13 Bolt	A193 B7	A193 B8	A193 B8
	14 Gland flange	A216 WCB	A351 CF8	A351 CF8
	15 Packing gland	A182 F6a	A182 F304	A182 F304
	16 Packing	PTFE	PTFE	PTFE
	17 Bolt	A193 B7	A193 B8	A193 B8
	18 Gland	A182 F6a	A182 F304	A182 F304
	19 O ring	NBR	NBR	NBR
	20 Nut	A194 2H	A194 8	A194 8M
	21 Gasket	PTFE	PTFE	PTFE
	22 Bonnet	A216 WCB	A351 CF8	A351 CF8M
	23 Spring	Spring steel	Spring steel	Spring steel
	24 Ball	A182 F6a	A182 F304	A182 F316
	25 Soft seat	PTFE	PTFE	PTFE
	26 Metal seat	A182 F6a	A182 F304	A182 F316
	27 Bolt	A193 B7	A193 B8	A193 B8

V. Standard



	European Standard PN				American Standard Class	
	Nominal Diameter	DN50	DN500		NPS2	NPS20
Nominal Pressure	PN10	PN16	PN25	PN40	CL150	CL300
Design standard			ISO17292		API 608	ASME B16.34
Flange standard		EN1092-1			ASME B16.5	
Flange type		RF	FM		RF	R
F to F dimension		EN558			ASME B16.10	
Pressure test		EN12266-1			API 598	
Shell test				1.5×CWP		
Seal test(water)				1.1×CWP		
Seal test(air)				0.6Mpa		
Body material		A216 WCB	A351 CF8	A351 CF8M		
Ball material		A182 F6a	A182 F304	A182 F316		
Metal seat material		A182 F6a	A182 F304	A182 F316		
Soft seat material			PTFE,RPTFE			
Stem material			A276 420	A705 630		
Operation			Lever, gear, pneumatic, electric			



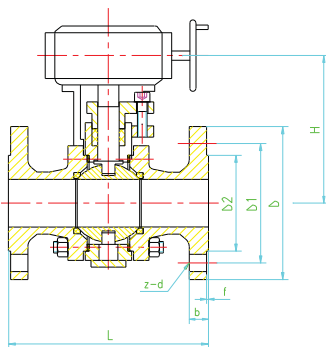
CHINA GATE GENERAL TRADING

تشاينا غيت للتجارة العامة

ALL TYPES OF PIPES, FITTINGS, & VALVES

Trunnion Mounted ball valve

VI. Configuraton Size



Q347F-16

DN	L	D	D1	D2	b	f	z-d	H	weight (KG)
50	178	165	125	102	18	3	4- 18	120	17
65	190	185	145	122	18	3	8- 18	153	26
80	203	200	160	138	20	3	8- 18	162	33
100	229	220	180	158	20	3	8- 18	191	50
125	356	250	210	188	22	3	8- 18	252	75
150	394	285	240	212	22	3	8- 22	272	93
200	457	340	295	268	24	3	12- 22	398	166
250	533	405	355	320	26	3	12- 26	495	273
300	610	460	410	378	28	4	12- 26	580	475
350	686	520	470	438	30	4	16- 26	625	570
400	762	580	525	490	32	4	16- 30	720	778
450	864	640	585	550	40	4	20- 30	770	935
500	914	715	650	610	44	4	20- 33	840	1190

Q347F-25

DN	L	D	D1	D2	b	f	z-d	H	weight (KG)
50	216	165	125	102	20	3	4- 18	125	17
65	241	185	145	122	22	3	8- 18	160	26
80	283	200	160	138	24	3	8- 18	167	33
100	305	235	190	162	24	3	8- 22	178	50
125	381	270	220	188	26	3	8- 26	252	75
150	403	300	250	218	28	3	8- 26	305	93
200	502	360	310	278	30	3	12- 26	398	166
250	568	425	370	335	32	3	12- 30	495	273
300	648	485	430	395	34	4	16- 30	580	475
350	762	555	490	450	38	4	16- 33	625	570
400	838	620	550	505	40	4	16- 36	720	778
450	914	670	600	548	46	4	20- 36	770	935
500	919	730	660	609	48	4	20- 36	840	1190



CHINA GATE GENERAL TRADING

تشاينا غيت للتجارة العامة

ALL TYPES OF PIPES, FITTINGS, & VALVES

Q347F-25

DN	L	D	D1	D2	b	f	z-d	H	weight (KG)
50	216	165	125	102	20	3	4- 18	160	18
65	241	185	145	122	22	3	8- 18	180	30
80	283	200	160	138	24	3	8- 18	204	40
100	305	235	190	162	24	3	8- 22	240	63
125	381	270	220	188	26	3	8- 26	320	120
150	403	300	250	218	28	3	8- 26	356	150
200	502	375	320	285	34	3	12- 30	398	240
250	568	450	385	345	38	3	12- 33	500	305
300	648	515	450	410	42	4	16- 33	590	507
350	762	580	510	465	46	4	16- 36	630	602
400	838	660	585	535	50	4	16- 39	725	1000

Q347F -CL150

NPS	L	D	D1	D2	b	f	z-d	H	weight (KG)
2	178	150	120.7	92.1	16.3	2	4- 19	120	17
2 1/2	190	180	139.7	104.8	17.9	2	4- 19	153	26
3	203	190	152.4	127.0	19.5	2	4- 19	162	33
4	229	230	190.5	157.2	24.3	2	8- 19	191	50
6	394	280	241.3	215.9	25.9	2	8- 22	272	93
8	457	345	298.5	269.9	29.0	2	8- 22	398	166
10	533	405	362.0	323.8	30.6	2	12- 26	495	273
12	610	485	431.8	381.0	32.2	2	12- 26	580	475
14	686	535	476.3	412.8	35.4	2	12- 29	625	570
16	762	595	539.8	469.9	37.0	2	16- 29	720	778
18	864	635	577.9	533.4	40.1	2	16- 32	770	935
20	914	700	635.0	584.2	43.3	2	20- 32	840	1190

Q347F -CL300

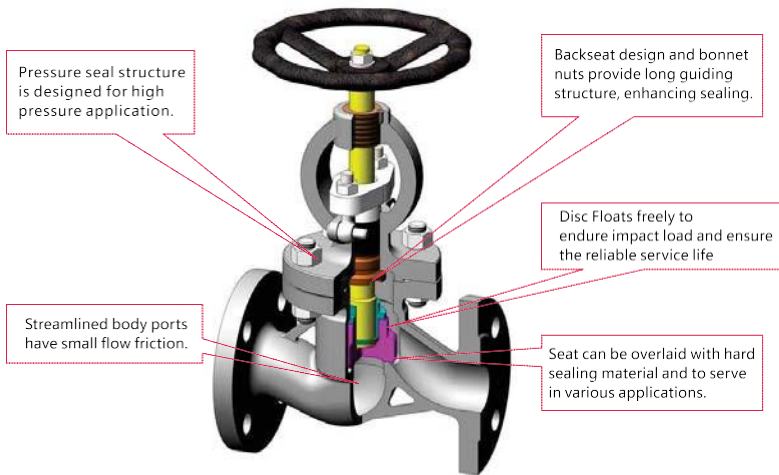
NPS	L	D	D1	D2	b	f	z-d	H	weight (KG)
2	216	165	127.0	92.1	22.7	2	8- 19	160	18
2 1/2	241	190	149.2	104.8	25.9	2	8- 22	180	30
3	282	210	168.3	127.0	29.6	2	8- 22	204	40
4	305	255	200.0	157.2	32.2	2	8- 22	240	63
6	403	320	269.9	215.9	37.0	2	12- 22	356	150
8	502	380	330.2	269.9	41.7	2	12- 26	398	240
10	568	445	387.4	323.8	48.1	2	16- 29	500	305
12	648	520	450.8	381.0	51.3	2	16- 32	590	507
14	762	585	514.4	412.8	54.4	2	20- 32	630	602
16	838	650	571.5	469.9	57.6	2	20- 35	725	1000



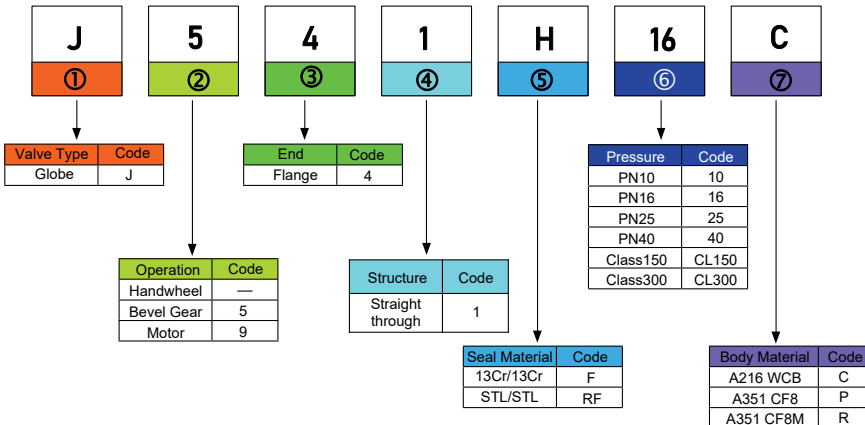
Globe Valve

I. Structure & Features

Globe valve is regular shut-off valve to connect and block the flow in the pipeline with easy structure and maintenance.



II. Coding System





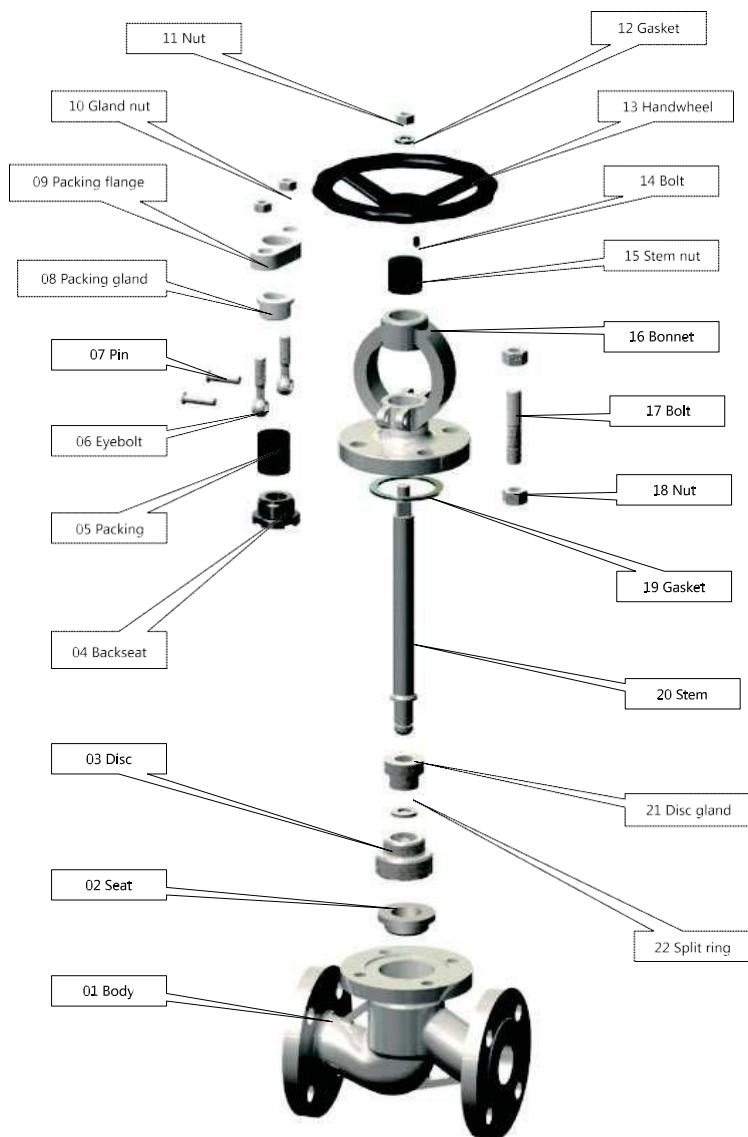
CHINA GATE GENERAL TRADING

تشاينا غيت للتجارة العامة

ALL TYPES OF PIPES, FITTINGS, & VALVES

Globe Valve

III. Disassembled View





CHINA GATE GENERAL TRADING

تشاينا غيت للتجارة العامة

ALL TYPES OF PIPES, FITTINGS, & VALVES

IV. Disassembled View

Valve material	Carbon steel C	CrNi S.S. P	CrNiMo S.S. R
01 Body	A216 WCB	A351 CF8	A351 CF8M
02 Seat	A105	A182 F304	A182 F316
03 Disc	A105	A182 F304	A182 F316
04 Backseat	A182 F6a	A182 F304	A182 F316
05 Packing	Graphite	Graphite	Graphite
06 Eyebolt	A193 B7	A193 B8	A193 B8
07 Pin	A108 Gr10-5	A276 30--	A276 304
08 Packing gland	A182 F6a	A182 F304	A182 F304
09 Gland flange	A216 WCB	A351 CF8	A351 CF8
10 Gland nut	A194 2H	A194 8	A194 8
11 Nut	A194 2H	A194 2H	A194 2H
12 Gasket	A570 Gr. A	A570 Gr. A	A570 Gr. A
13 Handwheel	A536 60-40-18	A536 60-40-18	A536 60-40-18
14 Bolt	A193 B7	A193 B7	A193 B7
15 Stem nut	Cu	Cu	Cu
16 Bonnet	A216 WCB	A351 CF8	A351 CF8M
17 Bolt	A193 B7	A193 B8	A193 B8M
18 Nut	A194 2H	A194 8	A194 8M
19 Gasket	A182 F304+Graphite	A182 F304+Graphite	A182 F304+Graphite
20 Stem	A276 420	A276 304	A276 316
21 Disc gland	A105	A182 F304	A182 F316
22 Split ring	A105	A182 F304	A182 F316

62

V. Standard



	European Standard		PN		American Standard		Class
Nominal Diameter	DN50	DN300			NPS2	NPS12	
Nominal Pressure	PN10	PN16	PN25		CL150	CL300	
		PN40					
Design standard	BS 1873		BS 1873		ASME B16.34		
Flange standard	EN1092-1				ASME B16.5		
Flange type	RF FM				RF R		
F to F dimension	EN558				ASME B16.10		
Pressure test	EN12266-1				API 598		
Shell test					1.5×CWP		
Seal test(water)					1.1×CWP		
Seal test(air)					0.6Mpa		
Body material	A216 WCB		A351 CF8	A351 CF8M			
Disc material	A105+13	Cr	A182 F304	A182 F304+S L	A182 F316	A182 F316+S L	
Seal material	A105+13	Cr	A182 F304	A182 F304+S L	A182 F316	A182 F316+S L	
Stem Material	A276 420		A182 F304	A182 F316			
Operation			Handwheel, Bevel gear, motor				



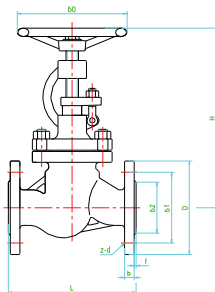
CHINA GATE GENERAL TRADING

تشاينا غيت للتجارة العامة

ALL TYPES OF PIPES, FITTINGS, & VALVES

VI. Configuration Size

Globe Valve



J41H-16

DN	L	D	D1	D2	b	f	z-d	D0	H	Weight(KG)
50	230	165	125	102	18	3	4- 18	200	320	21
65	290	185	145	122	18	3	8- 18	250	325	29
80	310	200	160	138	20	3	8- 18	250	355	35
100	350	220	180	158	20	3	8- 18	320	415	58
125	400	250	210	188	22	3	8- 18	320	460	78
150	480	285	240	212	22	3	8- 22	320	510	104
200	600	340	295	268	24	3	12- 22	400	568	162
250	622	405	355	320	26	3	12- 26	400	752	289
300	698	460	410	378	28	4	12- 26	500	812	485

J41H-25

DN	L	D	D1	D2	b	f	z-d	D0	H	Weight(KG)
50	230	165	125	102	20	3	4- 18	200	325	21
65	290	185	145	122	22	3	8- 18	250	345	29
80	310	200	160	138	24	3	8- 18	250	360	35
100	350	235	190	162	24	3	8- 22	320	370	58
125	400	270	220	188	26	3	8- 26	320	480	78
150	480	300	250	218	28	3	8- 26	320	598	104
200	600	360	310	278	30	3	12- 26	400	702	162
250	622	425	370	335	32	3	12- 30	400	782	289
300	711	485	430	395	34	4	16- 30	500	880	485

J41H-40

DN	L	D	D1	D2	b	f	z-d	D0	H	Weight(KG)
50	230	165	125	102	20	3	4- 18	200	350	26
65	290	185	145	122	22	3	8- 18	250	400	38
80	310	200	160	138	24	3	8- 18	250	430	51
100	350	235	190	162	24	3	8- 22	320	465	76
125	400	270	220	188	26	3	8- 26	320	505	125
150	480	300	250	218	28	3	8- 26	320	611	173
200	600	375	320	285	34	3	12- 30	400	722	297



CHINA GATE GENERAL TRADING

تشاينا غيت للتجارة العامة

ALL TYPES OF PIPES, FITTINGS, & VALVES

J41H-CL150

NPS	L	D	D1	D2	b	f	z-d	D0	H	Weight(KG)
2	203	150	120.7	92.1	16.3	2	4- 19	200	320	21
2 1/2	216	180	139.7	104.8	17.9	2	4- 19	250	325	29
3	241	190	152.4	127.0	19.5	2	4- 19	250	355	35
4	292	230	190.5	157.2	24.3	2	8- 19	320	415	58
6	356	280	241.3	215.9	25.9	2	8- 22	320	460	104
8	406	345	298.5	269.9	29.0	2	8- 22	320	510	162
10	495	405	362.0	323.8	30.6	2	12- 26	400	568	289
12	698	485	431.8	381.0	32.2	2	12- 26	400	752	485

J41H-CL300

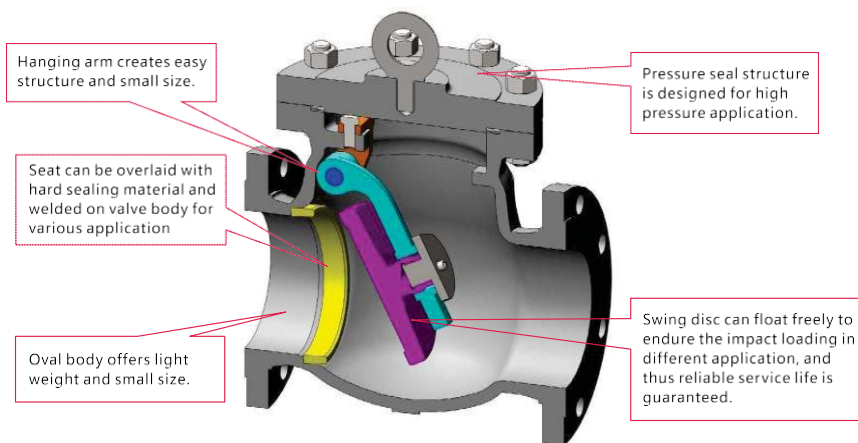
NPS	L	D	D1	D2	b	f	z-d	D0	H	Weight(KG)
2	267	165	127.0	92.1	22.7	2	8- 19	200	325	26
2 1/2	292	190	149.2	104.8	25.9	2	8- 22	250	345	38
3	318	210	168.3	127.0	29.6	2	8- 22	250	360	51
4	356	255	200.0	157.2	32.2	2	8- 22	320	370	76
6	400	320	269.9	215.9	37.0	2	12- 22	320	480	173
8	444	380	330.2	269.9	41.7	2	12- 26	320	598	297
10	559	445	387.4	323.8	48.1	2	16- 29	400	702	500
12	711	520	450.8	381.0	51.3	2	16- 32	400	782	724



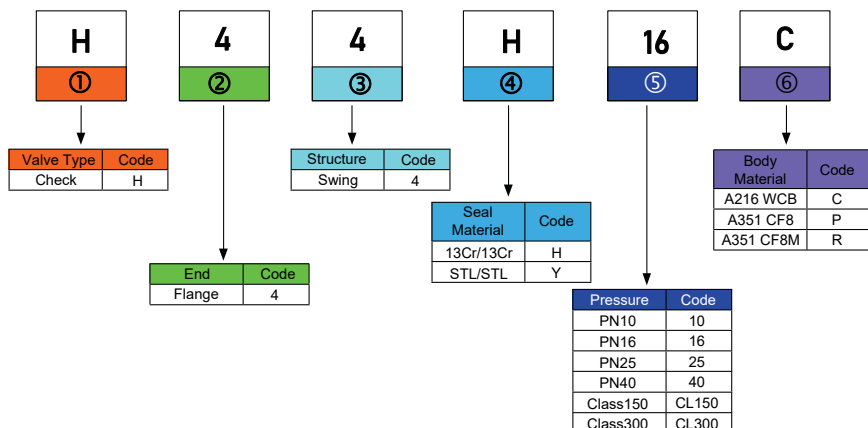
Swing Check Valve

I. Structure & Features

Swing check valve stops the media flowing back and opens by the force of disc. When the inlet pressure is smaller than outlet pressure, disc closes automatically to protect the pump.



II. Coding System

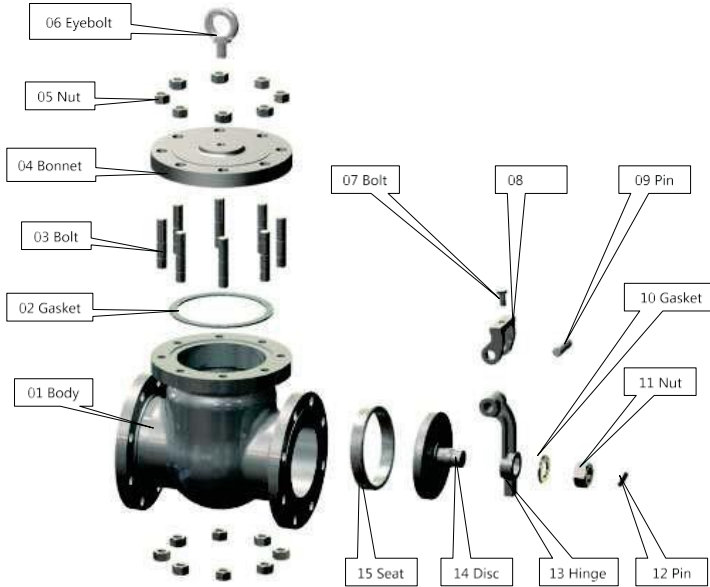


III. Disassembled view :



Swing Check Valve

III. Disassembled View



IV. Disassembled View

Spare Parts	Valve Material	Carbon Steel C	CrNi S.S. P	CrNiMo S.S. R
	01 Body	A216 WCB	A351 CF8	A351 CF8M
	02 Gasket	A182 F304 + Graphite	A182 F304 + Graphite	A182 F304 + Graphite
	03 Bolt	A193 B7	A193 B8	A193 B8M
	04 Bonnet	A216 WCB	A351 CF8	A351 CF8M
	05 Nut	A194 2H	A194 8	A194 8M
	06 Eyebolt	A193 B7	A193 B8	A193 B8M
	07 Bolt	A193 B7	A193 B8	A193 B8M
	08	A216 WCB	A351 CF8	A351 CF8M
	09 Pin	A276 420	A276 304	A276 F316
	10 Gasket	A194 2H	A194 8	A194 8M
	11 Nut	A194 2H	A194 8	A194 8M
	12 Pin	A276 420	A276 304	A276 F316
	13 Hinge	A216 WCB	A351 CF8	A351 CF8M
	14 Disc	A216 WCB	A351 CF8	A351 CF8M
	15 Seat	A105	A182 F304	A182 F316



V. Standard



	European Standard		PN	American Standard		Class
Nominal Diameter	DN50	DN400		NPS2	NPS16	
Nominal Pressure	PN10,PN16,PN25,PN40			CL150,CL300		
Design standard	BS 1873			ASME B16.34		
Flange standard	EN1092-1			ASME B16.5		
Flange type	RF,FM			RF,RJ		
F to F dimension	EN558			ASME B16.10		
Pressure test	EN12266-1			API 598		
Shell test				1.5×CWP		
Seal test(water)				1.1×CWP		
Seal test(air)				0.6Mpa		
Body material	A216 WCB,A351 CF8,A351 CF8M					
Disc material	A216 WCB+13 Cr	A351 CF8	A351CF8+S L			
	A351 CF8M	A351 CF8M+S L				
Seal material	A105+13 Cr	A182 F304	A182 F304+S L	A182 F316	A182 F316+S L	
Operation	Automatic					

VI.Configuration Size



H44H-16

DN	L	D	D1	D2	b	f	z-d	H	Weight(KG)
50	230	165	125	102	18	3	4- 18	155	15
65	290	185	145	122	18	3	8- 18	168	22
80	310	200	160	138	20	3	8- 18	185	28
100	350	220	180	158	20	3	8- 18	205	42
125	400	250	210	188	22	3	8- 18	230	57
150	480	285	240	212	22	3	8- 22	255	79
200	600	340	295	268	24	3	12- 22	310	131
250	622	405	355	320	26	3	12- 26	345	177
300	698	460	410	378	28	4	12- 26	370	282
350	787	520	470	438	30	4	16- 26	415	380
400	914	580	525	490	32	4	16- 30	460	542



CHINA GATE GENERAL TRADING

تشاينا غيت للتجارة العامة

ALL TYPES OF PIPES, FITTINGS, & VALVES

Swing Check Valve

H44H-25

DN	L	D	D1	D2	b	f	z-d	H	Weight(KG)
50	230	165	125	102	20	3	4- 18	155	15
65	290	185	145	122	22	3	8- 18	168	22
80	310	200	160	138	22	3	8- 18	185	28
100	350	235	190	162	24	3	8- 22	205	42
125	400	270	220	188	26	3	8- 26	230	57
150	480	300	250	218	28	3	8- 26	255	79
200	600	360	310	278	30	3	12- 26	310	131
250	622	425	370	335	32	3	12- 30	345	177
300	711	485	430	395	34	..	16- 30	370	282
350	838	555	490	450	38	..	16- 33	415	380
400	862	620	550	505	40	..	16- 36	460	542

H44H-40

DN	L	D	D1	D2	b	f	z-d	H	Weight(KG)
50	230	165	125	102	20	3	4- 18	165	20
65	290	185	145	122	22	3	8- 18	185	30
80	310	200	160	138	22	3	8- 18	205	40
100	350	235	190	162	24	3	8- 22	228	65
125	400	270	220	188	26	3	8- 26	250	84
150	480	300	250	218	28	3	8- 26	275	118
200	600	375	320	285	30	3	12- 30	325	193
250	622	450	385	345	32	3	12- 33	378	310
300	711	515	450	410	34	..	16- 33	410	450

H44H-CL150

NPS	L	D	D1	D2	b	f	z-d	H	Weight(KG)
2	203	150	120.7	92.1	16.3	2	4- 19	155	15
2 1/2	216	180	139.7	101.8	17.9	2	4- 19	168	22
3	241	190	152.4	127.0	19.5	2	4- 19	185	28
..	292	230	190.5	157.2	24.3	2	8- 19	205	42
6	406	280	241.3	215.9	25.9	2	8- 22	255	79
8	495	345	298.5	269.9	29.0	2	8- 22	310	131
10	622	405	362.0	323.8	30.6	2	12- 26	345	177
12	698	485	431.8	381.0	32.2	2	12- 26	370	282
14	787	535	476.3	412.8	35.4	2	12- 29	415	380
16	914	595	539.8	469.9	37.0	2	16- 29	460	542



CHINA GATE GENERAL TRADING

تشاينا غيت للتجارة العامة

ALL TYPES OF PIPES, FITTINGS, & VALVES

H44H-CL300

NPS	L	D	D1	D2	b	f	z-d	H	Weight(KG)
2	267	165	127.0	92.1	22.7	2	8- 19	165	20
2 1/2	292	190	149.2	104.8	25.9	2	8- 22	185	30
3	318	210	168.3	127.0	29.6	2	8- 22	205	40
4	356	255	200.0	157.2	32.2	2	8- 22	228	65
6	444	320	269.9	215.9	37.0	2	12- 22	275	118
8	559	380	330.2	269.9	41.7	2	12- 26	325	193
10	622	445	387.4	323.8	48.1	2	16- 29	378	310
12	711	520	450.8	381.0	51.3	2	16- 32	410	450



Gate Valve

I. Structure & Features

Gate valve is one of most common shut-off valves that connects and cut off the flow featuring small friction, convenient opening and closing and bi-directional utility.

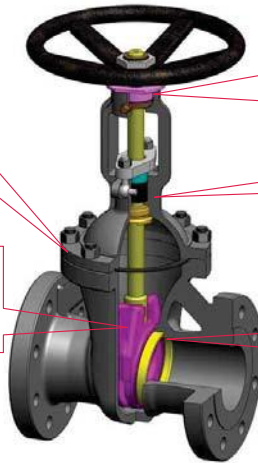
Spherical shape enables valve to endure uniform force with low possibility of deformation.

Jacket type of stem nut eliminates the accident. Rolling bearing between nut and yoke offers small torque in accordance with pressure rating and specification.

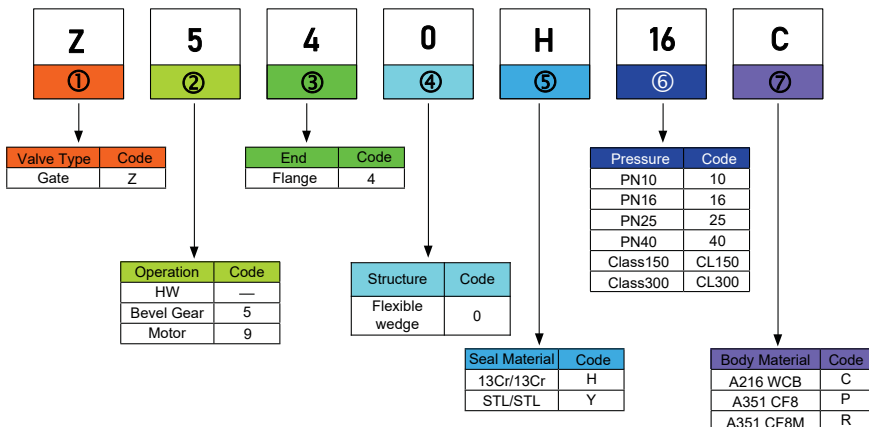
Backseat design conforms to API600.

Flexible wedge adapts itself to body deformation. Wide seal face of wedge provides wearing allowance and long service life.

Seat can be overlaid with hard sealing material and welded on valve body for various applications

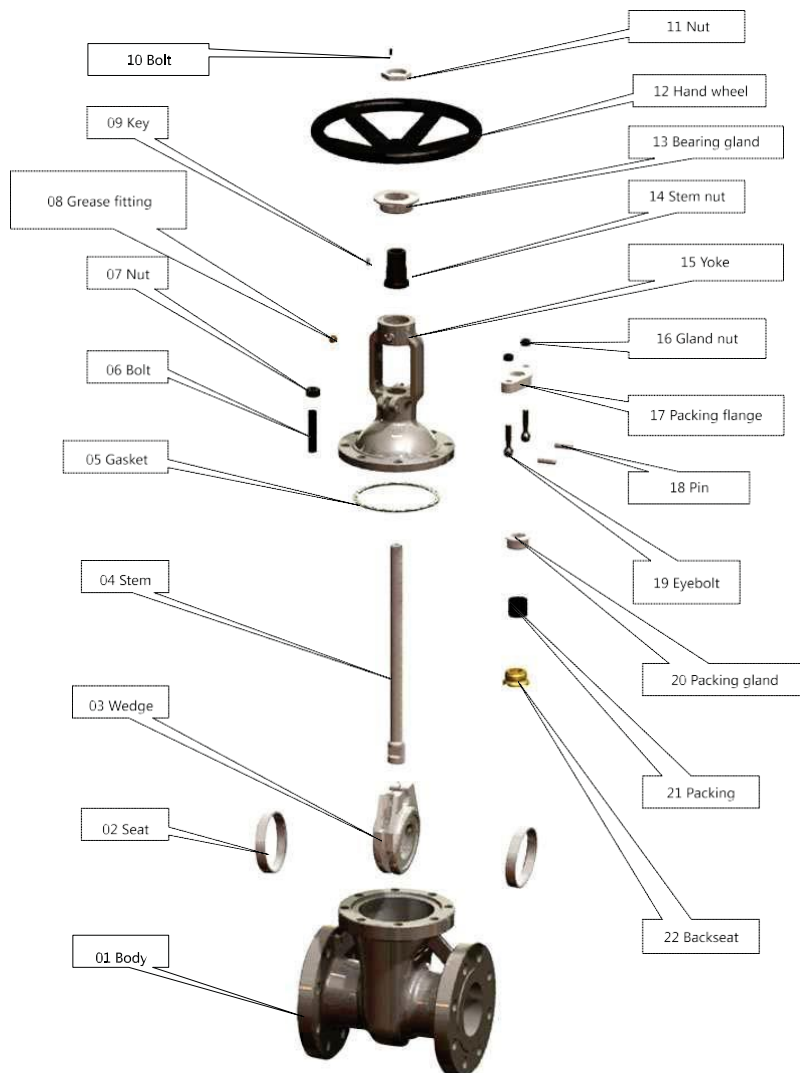


II. Coding System





III. Disassembled View





IV. Disassembled View

Valve material	Carbon steel C	CrNi S.S. P	CrNiMo S.S. R
01 Body	A216 WCB	A351 CF8	A351 CF8M
02 Seat	A105	A182 F304	A182 F316
03 Wedge	A216 WCB	A351 CF8	A351 CF8M
04 Stem	A276 420	A276 304	A276 316
05 Gasket	A182 F304+Graphite	A182 F304+Graphite	A182 F304+Graphite
06 Bolt	A193 B7	A193 B8	A193 B8M
07 Nut	A194 2H	A19-- 8	A194 8M
08 Grease fitting	Alloy steel	Alloy steel	Alloy steel
09 Key	A108 Gr.1045	A108 Gr.1045	A108 Gr.1045
10 Bolt	A193 B7	A193 B7	A193 B7
11 Nut	A194 2H	A194 2H	A194 2H
12 Handwheel	A536 60-40-18	A536 60-40-18	A536 60-40-18
13 Bearing gland	A108 Gr.1045	A108 Gr.1045	A108 Gr.1045
14Stem nut	Alloy steel	Alloy steel	Alloy steel
15 Yoke	A216 WCB	A351 CF8	A351 CF8M
16 Gland nut	A194 2H	A194 8	A19-- 8
17Packing flange	A216 WCB	A351 CF8	A351 CF8
18 Pin	A108 Gr.1045	A276 30--	A276 304
19 Eyebolt	A193 B7	A193 B8	A193 B8
20 Packing gland	A182 F6a	A182 F304	A182 F304
21 Packing	Graphite	Graphite	Graphite
22 Backseat	A182 F6a	A182 F304	A182 F304

V. Standard



	European Standard			PN	American Standard	Class
Nominal Diameter	DN50	DN600		NPS2	NPS24	
Nominal Pressure	PN10	PN16 PN25 PN40		CL150	CL300	
Design standard	ISO10434			API 600	ASME B16.34	
Flange standard	EN1092-1			ASME B16.5		
Flange type	RF FM			RF	R	
F to F dimension	EN558			ASME B16.10		
Pressure test	EN12266-1			API 598		
Shell test				1.5×CWP		
Seal test (water)				1.1×CWP		
Seal test (air)				0.6Mpa		
Body material	A216 WCB	A351 CF8	A351 CF8M			
Disc material	A216 WCB+13 Cr	A351 CF8	A351CF8+S L			
		A351 CF8M	A351 CF8M+S L			
Seal ring material	A105+13 Cr	A182 F304	A182 F304+S L	A182 F316	A182 F316+S L	
Stem material	A276 420	A182 F304	A182 F316			
Operation	Handwheel, bevel gear, motor					

CWP Cold Working Pressure

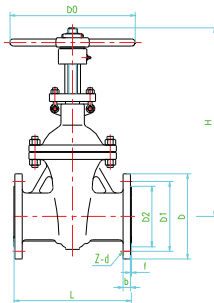


تشاينا غيت للتجارة العامة

ALL TYPES OF PIPES, FITTINGS, & VALVES

Could have

VI. Configuration Size



Z40H-16

DN	L	D	D1	D2	b	f	z-d	D0	H	Weight(KG)
50	250	165	125	102	18	3	4- 18	2-0	358	19
65	270	185	145	122	18	3	8- 18	255	415	26
80	280	200	160	138	20	3	8- 18	280	435	35
100	300	220	180	158	20	3	8- 18	320	500	49
150	350	285	240	212	22	3	8- 22	360	675	81
200	400	340	295	268	2-	3	12- 22	400	818	127
250	450	405	355	320	26	3	12- 26	456	970	20-
300	500	460	410	378	28	-	12- 26	500	1140	291
350	550	520	470	438	30	-	16- 26	600	1280	400
400	600	580	525	490	32	-	16- 30	720	1-50	486
450	650	640	585	550	40	-	20- 30	720	1580	610
500	700	715	650	610	44	-	20- 33	720	1675	788
600	800	840	770	725	54	5	20- 36	800	1990	1144

Z40H-25

DN	L	D	D1	D2	b	f	z-d	D0	H	Weight(KG)
50	250	165	125	102	20	3	4- 18	2-0	358	19
65	270	185	145	122	22	3	8- 18	255	415	26
80	280	200	160	138	2-	3	8- 18	280	435	35
100	300	235	190	162	24	3	8- 22	320	500	49
150	350	300	250	218	28	3	8- 26	360	675	81
200	400	360	310	278	30	3	12- 26	400	818	127
250	450	425	370	335	32	3	12- 30	456	970	20-
300	500	485	430	395	3-	-	16- 30	500	1140	291
350	550	555	490	450	38	-	16- 33	600	1280	400
400	600	620	550	505	40	-	16- 36	720	1-50	486
450	650	670	600	548	46	-	20- 36	720	1580	610
500	700	730	660	609	48	-	20- 36	720	1675	788
600	800	845	770	720	58	5	20- 39	800	1990	1144



CHINA GATE GENERAL TRADING

تشاينا غيت للتجارة العامة

ALL TYPES OF PIPES, FITTINGS, & VALVES

Z40H-40

DN	L	D	D1	D2	b	f	z-d	D0	H	Weight(KG)
50	250	165	125	102	20	3	4- 18	240	371	26
65	290	185	145	122	22	3	8- 18	255	432	35
80	310	200	160	138	24	3	8- 18	280	455	52
100	350	235	190	162	26	3	8- 22	320	551	75
150	450	300	250	218	28	3	8- 26	360	708	147
200	550	375	320	285	30	3	12- 30	400	885	235
250	650	450	385	345	38	3	12- 33	456	1015	350
300	750	515	450	410	42	4	16- 33	500	1160	472
350	850	580	510	465	46	4	16- 36	600	1310	683
400	950	660	585	535	50	4	16- 39	720	1-90	950
450	1050	685	610	560	57	...	20- 39	720	1750	1145
500	1150	755	670	615	57	...	20- 42	720	2050	1634
600	1350	890	795	735	72	5	20- 48	800	2215	2660

Z40H-CL150

NPS	L	D	D1	D2	b	f	z-d	D0	H	Weight(KG)
2	178	150	120.7	92.1	16.3	2	4- 19	240	358	19
2 1/2	190	180	139.7	104.8	17.9	2	4- 19	255	414	26
3	203	190	152.4	127.0	19.5	2	4- 19	280	434	35
4	229	230	190.5	157.2	24.3	2	8- 19	320	500	49
6	267	280	241.3	215.9	25.9	2	8- 22	360	676	81
8	292	345	298.5	269.9	29.0	2	8- 22	400	818	127
10	330	405	362.0	323.8	30.6	2	12- 26	456	970	204
12	356	485	431.8	381.0	32.2	2	12- 26	500	1140	291
14	381	535	476.3	412.8	35.4	2	12- 29	600	1280	400
16	406	595	539.8	469.9	37.0	2	16- 29	720	1450	486
18	432	635	577.9	533.4	40.1	2	16- 32	720	1580	610
20	457	700	635.0	584.2	43.3	2	20- 32	720	1674	788
24	508	815	749.3	692.2	48.1	2	20- 35	800	1989	1144

Z40H-CL300

NPS	L	D	D1	D2	b	f	z-d	D0	H	Weight(KG)
2	216	165	127.0	92.1	22.7	2	8- 19	240	371	26
2 1/2	241	190	149.2	104.8	25.9	2	8- 22	255	432	35
3	282	210	168.3	127.0	29.6	2	8- 22	280	455	52
4	305	255	200.0	157.2	32.2	2	8- 22	320	551	75
6	403	320	269.9	215.9	37.0	2	12- 22	360	709	147
8	419	380	330.2	269.9	41.7	2	12- 26	400	884	235
10	457	445	387.4	323.8	48.1	2	16- 29	456	1016	350
12	502	520	450.8	381.0	51.3	2	16- 32	500	1161	472
14	762	585	514.4	412.8	54.4	2	20- 32	600	1311	683
16	838	650	571.5	469.9	57.6	2	20- 35	720	1491	950
18	914	710	628.6	533.4	60.8	2	24- 35	720	1750	1145
20	991	775	685.8	584.2	64.0	2	24- 35	720	2050	1634
24	1143	915	812.8	692.2	70.3	2	24- 42	800	2215	2660

PROFESSIONAL FOCUS • FULL SERVICE



CHINA GATE GENERAL TRADING
تشاينا غيت للتجارة العامة

ALL TYPES OF PIPES, FITTINGS, & VALVES

For any further clarifications or enquiries kindly contact the below:

Mr.Anmu Jiede

☎ +971 56 886 6009

✉ amjad@chinagate.ae

📍 **Business Tower 704, Hamdan Bin Mohammed St., Abu Dhabi - Al Zahiyah**

☎ +971 2 626 7718

✉ info@chinagate.ae